

SUGOI®

VANCOUVER



EST. 1987

SUGOI IS FOR EVERYONE

SPRING.SUMMER.2021
CATALOG



TRIBUTE TO WOMEN

Sugoi is for everyone

Women in cycling is not a new thing. We'd hate to make it seem that way. Yet, women still represent a smaller half of the fractional pie. Sugoi wants to change that and advocates for gender parity in sport. Through adapting non-traditional designs, we seek to deconstruct the preconceived notions of cycling garb. These principles date back to Sugoi's founder, Carol Pratner, who blended her love for sportswear with her education in fashion. Today, Sugoi looks to inspire more women and new riders, and thus grow the voice and reduce the barriers of women in cycling.

SUGOI



INTERACTIONS WITH SURROUNDING

The Sugoi 2021 Summer Collection

The Sugoi SS21 collection explores our urban surroundings – the glass and steel of the city, views of towering sky scrapers and intricate architecture as we move through the bustling landscape on our morning commutes, after work laps along the seawall and everything in-between. Combining textural photography with a splash of colour, and new modern silhouettes, the 2021 collection delivers on style and performance.

TABLE OF CONTENTS

LEGEND
NEW COLOR:
AAA
CODE NAME
LIMITED EDITION:
AAA
CODE NAME

INTRODUCTION	02
PRINT STORIES	04
SUGOI CUSTOM	08
WOMEN'S CYCLING	10
MEN'S CYCLING	20
TRIATHLON	29
WOMEN'S ACTIVE	32
MEN'S ACTIVE	37
ACCESSORIES	40
FIT GUIDE	47
FABRIC GUIDE	48

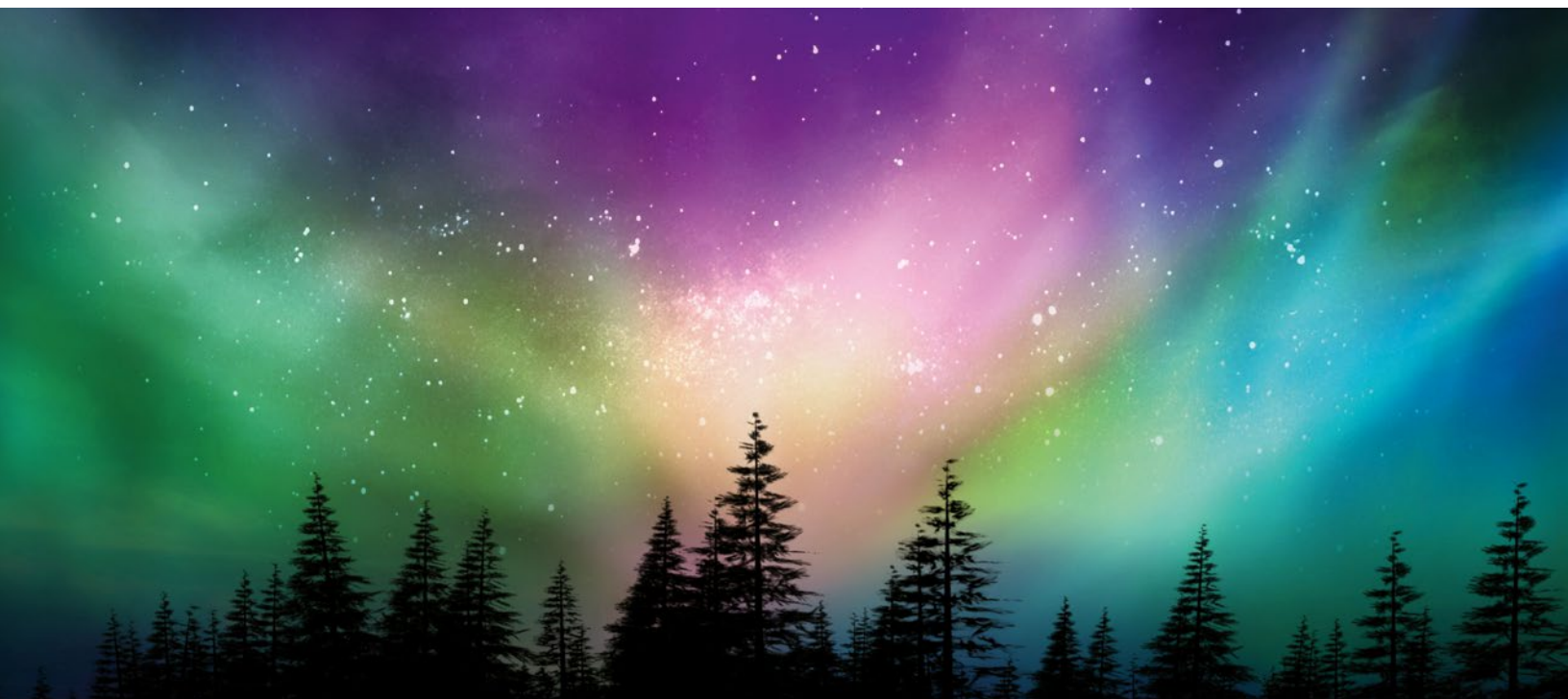


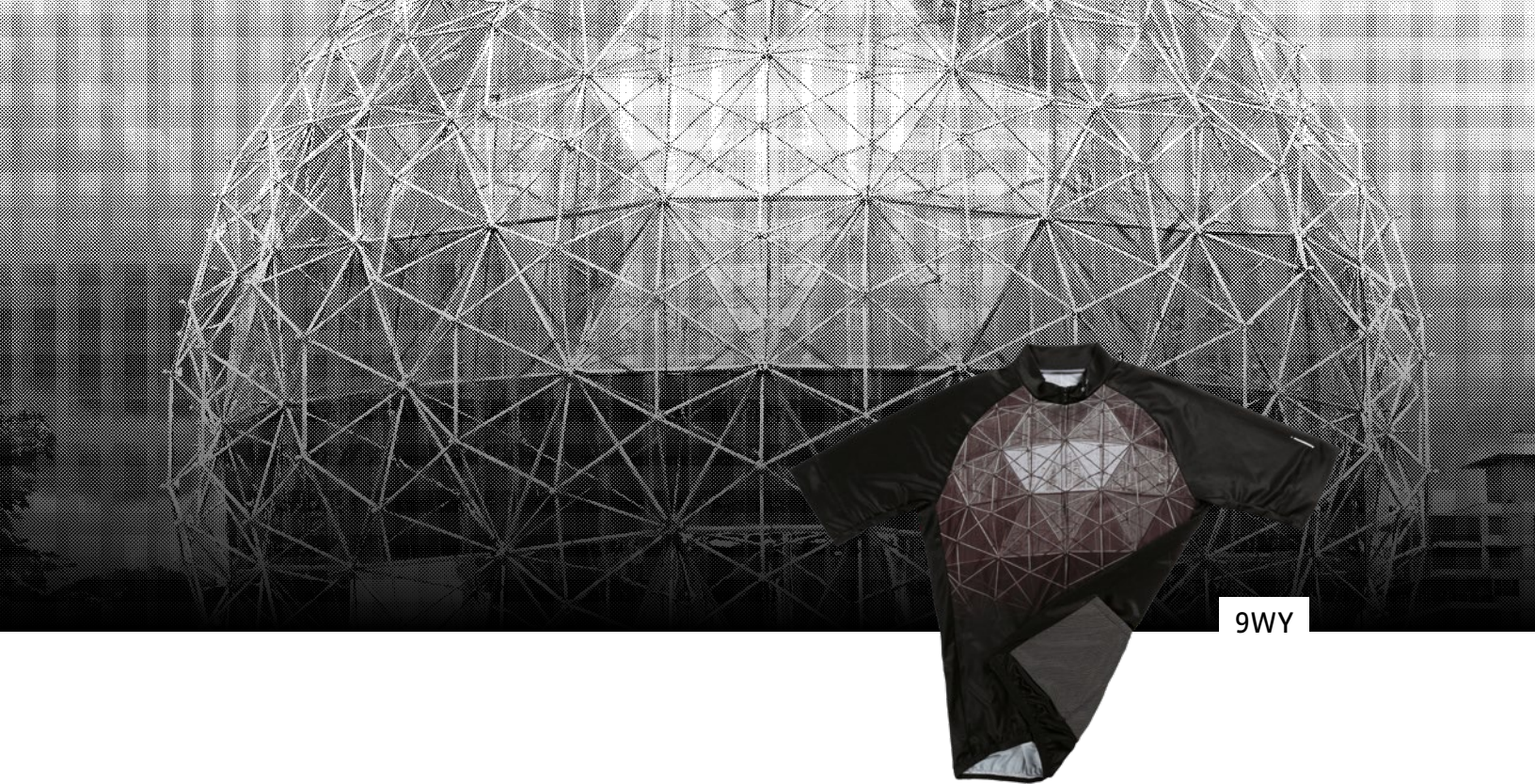


9WX

MAGIC SKY

When the sky gets magical! When the night's clear sky displays Northern Lights, a blend of green, purple and blue. Our 2021 magic sky was inspired by those rare moments. British Columbia offers plenty of places to observe a Magic Sky up north.





URBAN ARCHITECTURE

Expo 86 left behind a legacy of architecture on the Vancouver land. The Expo Center, now known as the Science World Building was built from 766 aluminum triangles and supported by an outer frame of steel. This iconic dome celebrates Vancouver's past, inspires the future and is part of our 2021 collection.

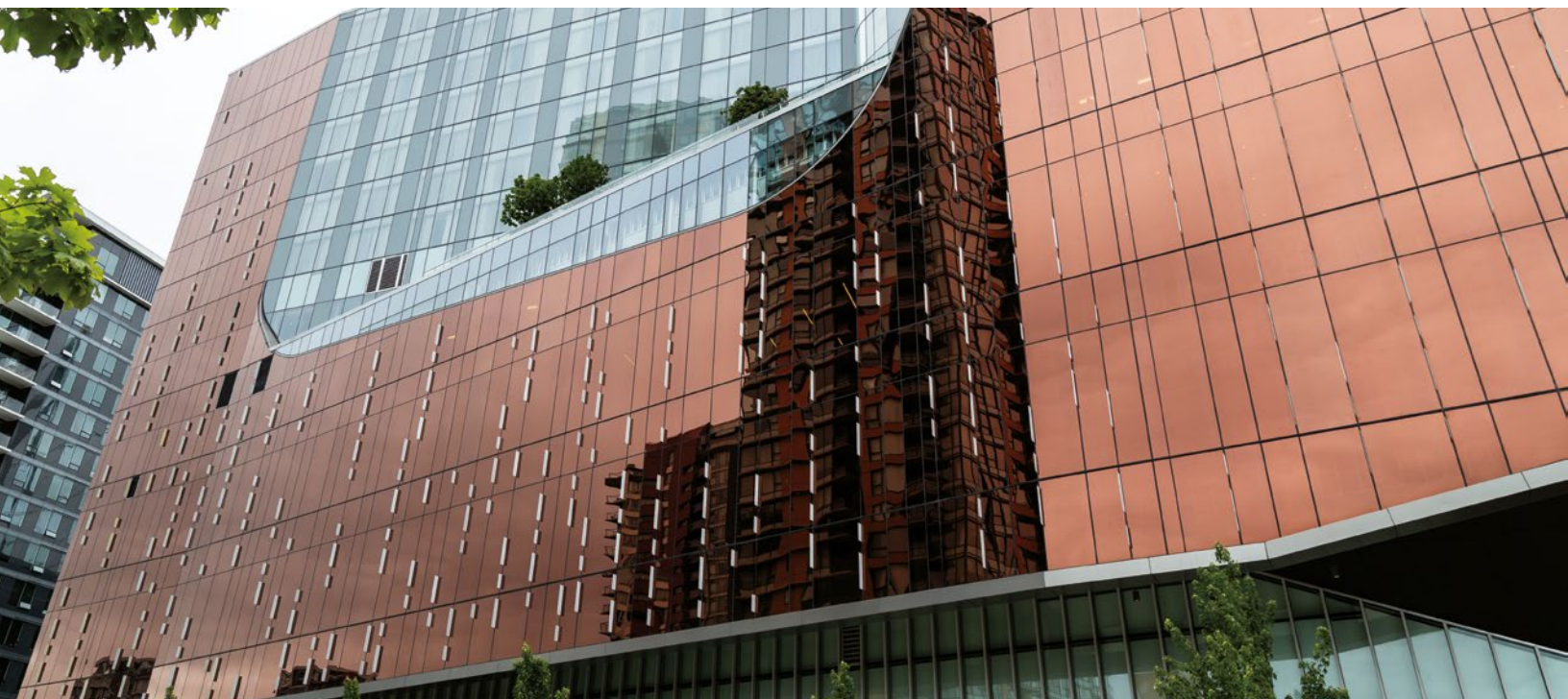


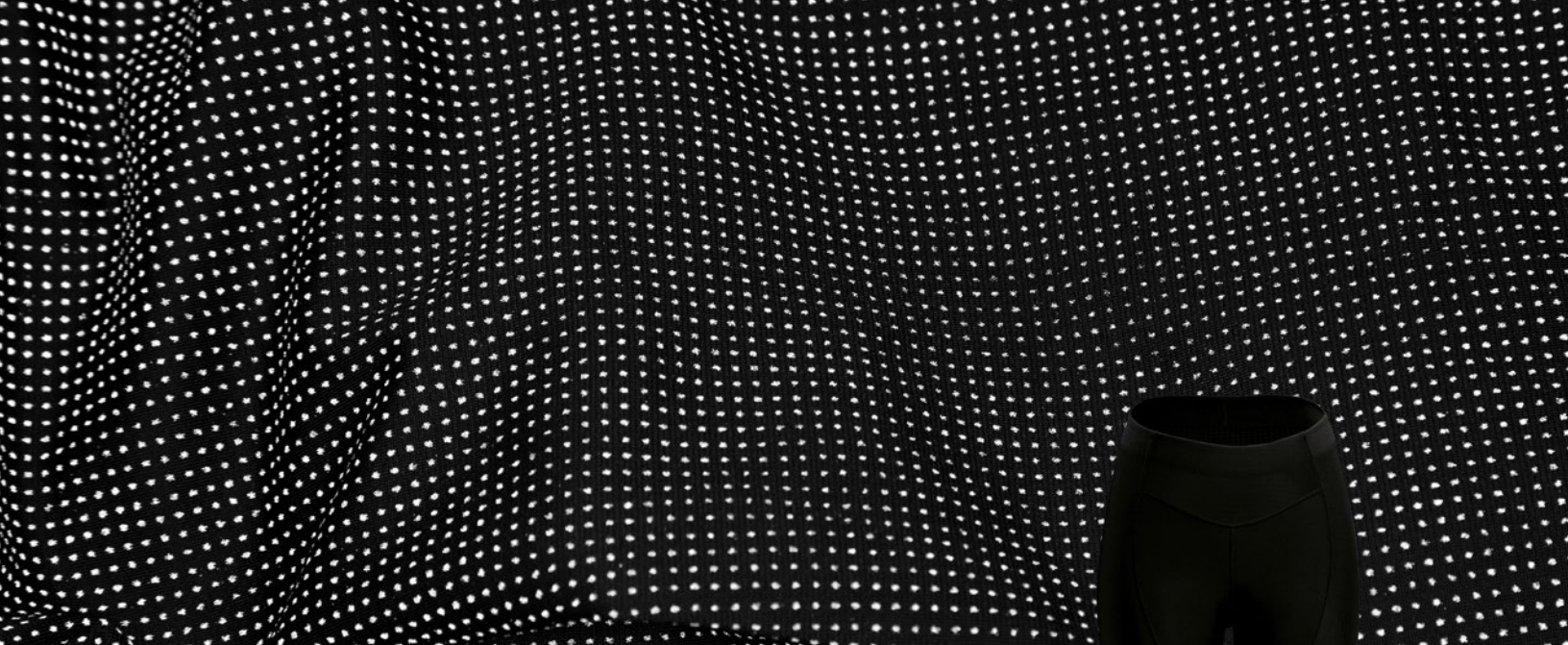


9WP

CITY ARCHITECTURE

Our 2021 design is influenced by a popular Vancouver building that captures the essence of the city. Defined by a myriad of lines, shapes, curves and slopes, the design is comprised of multiple facades paying tribute to different elements of the complex's surroundings. Its fluid forms and dynamic composition reflect the mountains, valleys, gorges and seascapes that frame the city. As sunlight shines and repositions through the course of the day, the metallic louvers bring the building to life in animated ways, while their reflections 'dance' on the nearby waters of the Pacific Ocean.





BE BRIGHT AT NIGHT

ZAPTECH™

It's time to shed some light on being active at night. Time to transform the darkness from something we avoid, to something we enjoy. With the confidence of wearing technical apparel using explosive reflectivity, for maximum visibility – powered by motorist's headlights. The moment conditions change, your commute won't.

Visit sugoi.com/zaptech to learn more.





**FORMULA FX
CHAMOIS**

Performance for the most challenging distances and conditions.

Ideal for 3+ hour rides

- Poron® high-density foam under sit bones for low-profile vibration damping
- Ergonomic shape
- Cradle construction for men



**RC PRO
CHAMOIS**

Comfort and performance for weekend group rides and training.

Ideal for 2 to 3-hour rides

- 90 kg/m³ density foam under sit bones for vibration damping
- Ergonomic shape with 4-way stretch
- Cradle construction for men



**RC 100
CHAMOIS**

Comfort for shorter distances and building base fitness.

Ideal for 1 to 2-hour rides

- Low-density foam under sit bones for vibration damping
- Ergonomic shape with 4-way stretch
- Seamless top surface to reduce chafing

YOUR HOUSE YOUR STORY YOUR WAY

The DIY Custom Graphic designates customizable styles within our inline collections, so you can promote your brand.





WOMEN'S CYCLING

RS PRO JERSEY

U575530F

Our race cut jersey made of lightweight supple fabrics, offering exceptional performance in a modern design that fits snug to the body.

- Full Moon 2.0 fabric offers breathability, moisture control and UPF 50 protection
- Full Moon fabric at sleeves and side panels provides ventilation with UPF 15 sun protection
- Back hem bonded with portofino gripper for a thin, clean finish
- Traditional three rear pocket design with gusset to store your ride essentials
- Laser-style finished gripper band at sleeve opening

FABRICS: FULL MOON 2.0, FULL MOON, AEROBAND,
86% POLYESTER 14% SPANDEX
SIZES: XS-XL



MOISTURE TRANSFER



BREATHABLE FABRIC



SUN PROTECTION



SLIM FIT

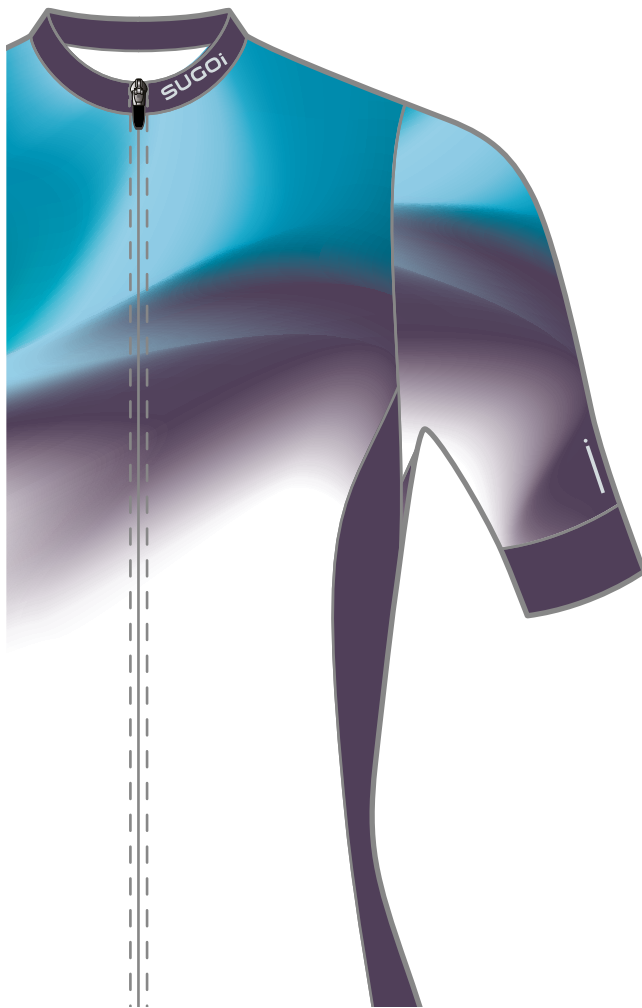


DIY



9WX
REGAL MAGIC SKY

9WW
NAVY URBAN ARCHITECTURE



9WX
REGAL MAGIC SKY



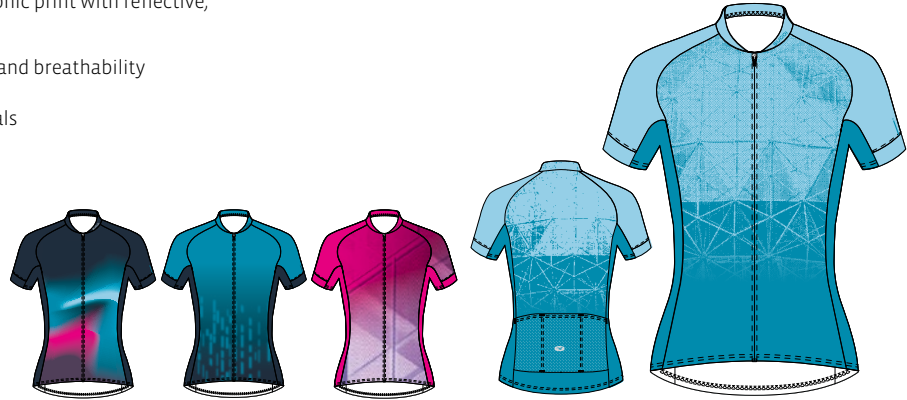
9WW
NAVY URBAN ARCHITECTURE

EVOLUTION ZAP JERSEY

U576010F

Our performance-filled Standard Fit jersey in a graphic print with reflective, highly visible Zap pockets.

- Dri Tech fabric provides moisture management and breathability
- Full length zipper for ventilation
- Three elastic back pockets to store your essentials with Zap reflectivity for visibility
- Provides UPF 30 sun protection



FABRICS: DRI TECH, DRI TECH TD, ZAP 300, 100% POLYESTER
SIZES: XS-XL



9XE
MAGIC SKY

9WP
CITY ARCHITECTURE

9WS
PINK URBAN
ARCHITECTURE

9WN
TOPAZ URBAN
ARCHITECTURE



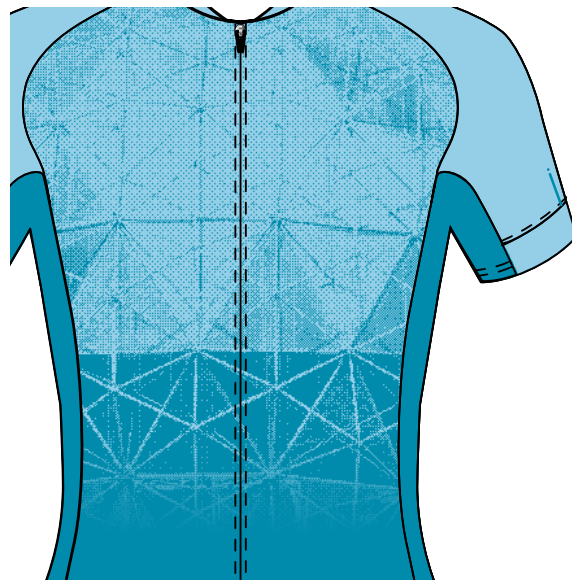
9XE
MAGIC SKY



9WP
CITY ARCHITECTURE



9WS
PINK URBAN
ARCHITECTURE



9WN
TOPAZ URBAN
ARCHITECTURE

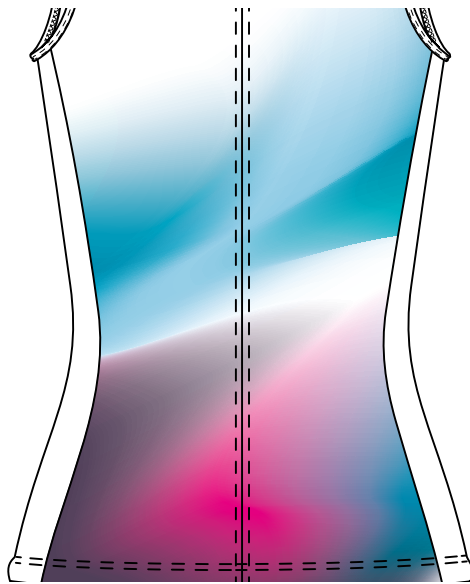
EVOLUTION ZAP SL JERSEY

U566010F

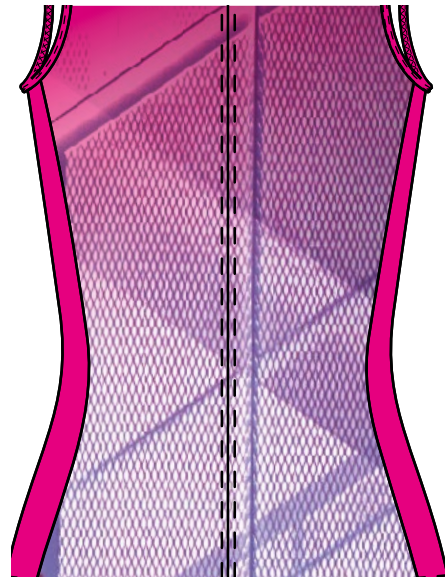
Our performance-filled sleeveless Standard Fit jersey in an array of graphic prints with reflective, highly visible Zap pockets.

- Dri Tech fabric provides moisture management and breathability
- Full length zipper for ventilation
- Three elastic back pockets to store your essentials with Zap reflectivity for visibility

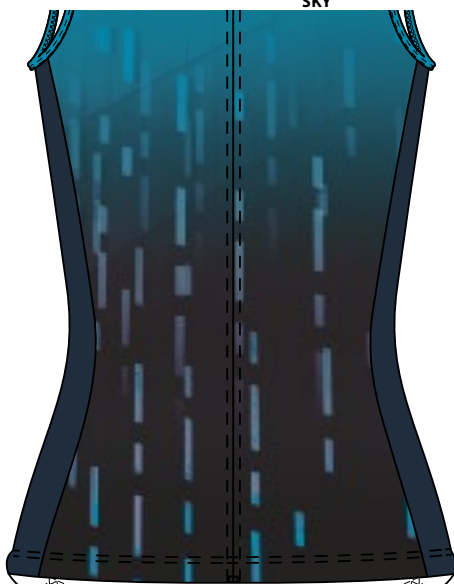
FABRICS: DRI TECH, DRI TECH TD, ZAP 300, 100% POLYESTER
SIZES: XS-XL



9WQ
WHITE MAGIC SKY



9WS
PINK URBAN ARCHITECTURE



9WP
CITY ARCHITECTURE

ESSENCE JERSEY

U575560F

Our Standard Fit jersey with essential performance features that focus on comfort.

- Essence fabric provides moisture management and breathability
- Traditional three rear pocket design to store your ride essentials
- Full length zipper for ventilation
- Elastic silicone gripper at back hem for a secure fit



FABRICS: ESSENCE, 100% POLYESTER
SIZES: XS-2XL



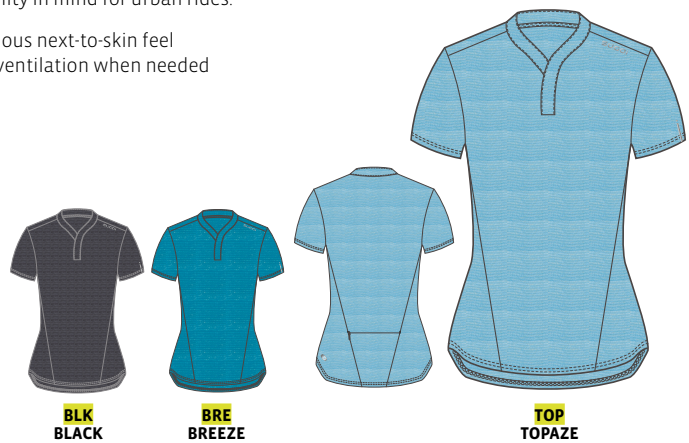
ARD JERSEY

U580060F

NEW

Our new All-Road Jersey was designed with a sleek, modern look and versatility in mind for urban rides.

- Active Melange is a lightweight striped fabric for breathability and luxurious next-to-skin feel
- Stylish collar with discreet snap closure, for a refined look and plenty of ventilation when needed
- Reflective elements for low-light conditions
- Center back pocket with invisible zip for secure storage



FABRIC: ACTIVE MELANGE, 87% NYLON 8% POLYESTER 5% SPANDEX
FABRIC METRICS: 4.72 OZ/YD², 160 G/M²
SIZES: XS-2XL



BLK
BLACK



BRE
BREEZE



TOP
TOPAZE

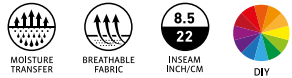
RS PRO BIB SHORTS

U391000F

Built for long days in the saddle. Multi-fabric construction with impeccable comfort and fit anchored by a 3D chamois design.

- Firo fabric with outstanding wicking properties and breathability provides great muscle support and shape recovery
- Ultra Aero fabric at outer thighs for maximum aero efficiency
- Pit Stop bib straps for quick bathroom breaks
- Invisa Chamois eliminates stitch lines around the chamois for a flattering silhouette
- Formula FX Chamois with Poron® foam at sit bones for enhanced performance
- Infused silicone gripper leg band for a clean, smooth fit

FABRICS: FIRO, ULTRA AERO S, MOBIL MESH, AEROBAND,
78% NYLON 22% SPANDEX
FABRIC METRICS: 5.90 OZ/YD², 200 G/M²
CHAMOIS: WOMEN'S FORMULA FX
SIZES: XS-XL



BLK
BLACK

RS PRO SHORTS

U381000F

Built for long days in the saddle. Multi-fabric construction with impeccable comfort and fit, anchored by a 3D chamois design.

- Firo fabric with outstanding wicking properties and breathability provides great muscles support and shape recovery
- Ultra Aero fabric at outer thighs for maximum aero efficiency
- Invisa Chamois eliminates stitch lines around the chamois for a flattering silhouette
- Formula FX Chamois with Poron® foam at sit bones for enhanced performance
- Infused silicone gripper leg band for a clean, smooth fit

FABRICS: FIRO, ULTRA AERO S, AEROBAND, 78% NYLON
22% SPANDEX
FABRIC METRICS: 5.90 OZ/YD², 200 G/M²
CHAMOIS: WOMEN'S FORMULA FX
SIZES: XS-XL



BLK
BLACK

DNV
DARK NAVY

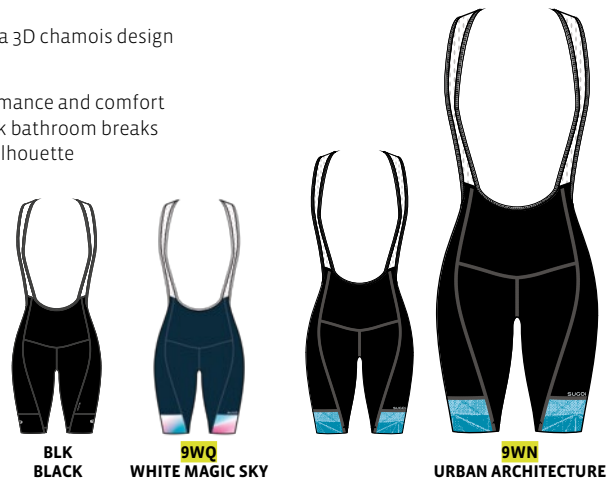
EVOLUTION BIB SHORTS / EVOLUTION PRT BIB SHORTS

U392000F / U392020F

Performance-tailored, feature-filled and value-packed bib shorts, anchored by a 3D chamois design with Invisa Chamois.

- Evo Plus is a moisture-wicking and breathable fabric for high output performance and comfort
- Mobil Mesh bib for ventilation and support with Pit Stop bib straps for quick bathroom breaks
- Invisa Chamois eliminates stitch lines around the chamois for a flattering silhouette
- RC Pro Chamois with 3D construction for increased comfort in the saddle
- MAB® PowerBand silicone leg gripper provide slip-free comfort without constricting your thighs

FABRICS: EVOPLUS, MOBIL MESH,
81% NYLON 19% SPANDEX
FABRIC METRICS: 8.24 OZ/YD², 280 G/M²
CHAMOIS: WOMEN'S RC PRO
SIZES: XS-XL



BLK
BLACK

9WQ
WHITE MAGIC SKY

9WN
URBAN ARCHITECTURE



9WQ
WHITE MAGIC SKY



9WN
URBAN ARCHITECTURE

EVOLUTION ZAP SHORTS

U382040F

Performance-tailored, feature-filled and value-packed with high-visibility Zap leg bands to keep you riding confidently in low-light conditions.

- Evo Plus is a moisture wicking, breathable fabric for high output performance and comfort
- Comfort waistband construction, flat seams and eight panel design for a body contoured fit
- Invisa Chamois eliminates stitch lines around the chamois for a flattering silhouette
- RC Pro Chamois with 3D construction for increased comfort in the saddle
- Zap leg band with silicone gripper provides slip-free comfort and high visibility during night rides

FABRICS: DRI TECH, DRI TECH TD, ZAP 300, 100%
POLYESTER
SIZES: XS-XL



BLK
BLACK

EVOLUTION SHORTS / EVOLUTION PRT SHORTS

U382000F / U382050F

Performance-tailored, feature-filled and value-packed shorts, anchored by a 3D chamois design with Invisa Chamois design.

- Evo Plus is a moisture wicking, breathable fabric for high output performance and comfort
- Comfort waistband construction, flat seams and eight panel design for a body contoured fit
- Invisa Chamois eliminates stitch lines around the chamois for a flattering silhouette
- RC Pro Chamois with 3D construction for increased comfort in the saddle
- MAB® PowerBand silicone leg gripper provides slip-free comfort without constricting your thighs

FABRIC: EVOPLUS, 81% NYLON 19% SPANDEX
 FABRIC METRICS: 8.24 OZ/YD², 280 G/M²
 CHAMOIS: WOMEN'S RC PRO
 SIZES: XS-XL



9WQ
 WHITE
 MAGIC SKY



9WP
 CITY
 ARCHITECTURE



9WS
 URBAN ARCHITECTURE

EVOLUTION SHORTIES

U382010F

Feature-filled and value-packed shorts to stay happy in the saddle, with a shorter inseam and Invisa Chamois design to eliminate seam lines.

- Evo Plus is a moisture wicking and breathable fabric for high output performance and comfort
- Comfort waistband construction, flat seams and eight-panel design for a body contoured fit
- Invisa Chamois eliminates stitch lines around the chamois for a flattering silhouette
- RC Pro Chamois with 3D construction for increased comfort in the saddle
- MAB® PowerBand silicone leg gripper provides slip-free comfort without constricting your thighs

FABRIC: EVOPLUS, 81% NYLON 19% SPANDEX
 FABRIC METRICS: 8.24 OZ/YD², 280 G/M²
 CHAMOIS: WOMEN'S RC PRO
 SIZES: XS-XL



BLK
 BLACK

EVOLUTION KNICKERS

U387000F

Feature-filled and value-packed performance knickers that provide additional leg coverage.

- Evo Plus is a moisture-wicking and breathable fabric for high output performance and comfort
- Comfort waistband construction for body contoured fit
- Invisa chamois eliminates stitch lines around the chamois for a flattering silhouette
- RC Pro Chamois with 3D construction for increased comfort in the saddle
- MAB® PowerBand silicone gripper provides slip-free comfort without constricting your calves

FABRIC: EVOPLUS, 81% NYLON 19% SPANDEX
FABRIC METRICS: 8.24 OZ/YD², 280 G/M²
CHAMOIS: WOMEN'S RC PRO
SIZES: XS-XL



BLK
BLACK

ESSENCE SHORTS

U382060F

Equip yourself with essential performance features that focus on keeping you comfortable in the saddle.

- Triflex emboss fabric for moisture-wicking and supportive stretch
- Comfort waistband construction and six-panel design keep shorts in place
- RC 100 Chamois with 3D construction for increased comfort in the saddle

FABRIC: TRIFLEX EMOSS, 85% NYLON 15% SPANDEX
FABRIC METRICS: 6.54 OZ/YD², 221 G/M²
CHAMOIS: WOMEN'S RC 100
SIZES: XS-2XL



BLK
BLACK

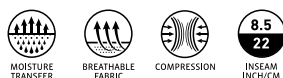
CLASSIC SHORTS

U384000F

Enjoy the true comfort of proper cycling shorts. The entry-level Classic Shorts will keep you happy in the saddle.

- Piston 230 compression technology for lower body support and performance
- Soft waistband elastic and six-panel design keeps shorts properly positioned
- RC 100 Chamois provides versatile comfort
- Self-fabric folded leg band without silicone gripper

FABRIC: PISTON 230, 72% NYLON 28% SPANDEX
FABRIC METRICS: 6.80 OZ/YD², 230 G/M²
CHAMOIS: WOMEN'S RC 100
SIZES: XS-XL



BLK
BLACK

ARD SHORTS

NEW

U350040F

Designed for any adventure on two-wheels, our All-Road Shorts are casually styled and packed with features like a removable liner with our RC 100 chamois and secure storage.

- 4-way stretch Mobil Shell provides comfort and durability while pedaling
- Seamless crotch panel
- Two front hand pockets with an inner zippered security pocket for secure storage
- Belt loops
- Hidden front zip fly with snap button and hook and loop closure
- Cycling-specific design and fit
- Removable liner with RC 100 chamois
- Reflective elements for low-light conditions

FABRIC: MOBIL, MOBIL MESH 87% POLYESTER 13% SPANDEX
FABRIC METRICS: 4.00 OZ/YD², 136 G/M²
CHAMOIS: WOMEN'S RC 100
SIZES: XS-2XL
INSEAM: 11.5"/29.5CM



ARD CAPRI

NEW

U389540F

For when your ride or the conditions demand extra coverage, the All-Road Capri is ready for action.

- 4-way stretch Mobil Shell provides comfort and durability while pedaling
- Seamless crotch panel
- Two front hand pockets with an inner zippered security pocket for secure storage
- Belt loops
- Hidden front zip fly with snap button and hook and loop closure
- Cycling-specific design and fit
- Removable liner with RC 100 chamois
- Reflective elements for low-light conditions

FABRIC: MOBIL, MOBIL MESH 87% POLYESTER 13% SPANDEX
FABRIC METRICS: 4.00 OZ/YD², 136 G/M²
CHAMOIS: WOMEN'S RC 100
SIZES: XS-2XL
INSEAM: 18"/46CM



OFF GRID 2 SHORTS

NEW

U350050F

Ultra-durable and with a water-resistant coating, these slim-fitting 4-way stretch shorts are perfect for all-road riding and bikepacking adventures alike.

- Core Flex Lite is a durable mid-weight woven fabric offering 4-way stretch with a DWR finish
- Seamless crotch panel
- Two zippered hand pockets and one side zippered stow pocket to secure your ride essentials
- Waistband retention system for an adjustable fit
- Cycling-specific design and fit
- Removable liner with RC Pro chamois
- Reflective elements for low-light conditions

FABRIC: CORE FLEX LITE, MOBIL MESH 90% NYLON 10% SPANDEX
FABRIC METRICS: 5.00 OZ/YD², 170 G/M²
CHAMOIS: WOMEN'S RC PRO
SIZES: XS-2XL
INSEAM: 11.5"/29.5CM



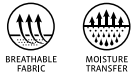
OFF GRID KNICKERS

U389520F

Experience added coverage for your next adventure. The Off Grid Knickers deliver support and comfort for all-road riding and multi-day excursions.

- Active Plush fabric for moisture-wicking and breathability
- Front zippered pocket to store your essentials
- Invisa chamois eliminates stitch lines around the chamois for a flattering silhouette
- Flat seam and comfort waistband construction for body contoured fit with center back integrated key pocket

FABRICS: ACTIVE PLUSH, POWER MESH
78% POLYESTER 22% SPANDEX
FABRIC METRICS: 7.50 OZ/YD², 254 G/M²
CHAMOIS: WOMEN'S RC 100
SIZES: XS-XL



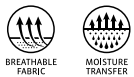
RC PRO LINER

U190010F

Lightweight mesh liner with integrated RC Pro Chamois to wear underneath baggy shorts or pants.

- Moisture-wicking comfort elastic waist band and flat seams for a low-profile fit
- RC Pro Chamois for all-day comfort in the saddle
- Signature leg gripper provides slip-free comfort without constricting your thighs

FABRIC: MOBIL MESH, 84% POLYESTER 16% SPANDEX
FABRIC METRICS: 4.52 OZ/YD², 153 G/M²
CHAMOIS: WOMEN'S RC PRO
SIZES: XS-XL



STASH JACKET

U705030F

Essential packable rain and wind shell that stows easily to arm you against possible showers and chilly descents.

- Helium 2.0 is a lightweight woven fabric providing effective wind and water resistance
- Strategically placed Piston 230 fabric under the sleeves for increased breathability and stretch
- Rear zippered pocket contains a stuffable pouch for the jacket that converts into a saddle bag
- Drop tail hem with elastic gripper for increased protection and a secure fit



BLK
BLACK

SNV
SUPERNOVA YELLOW

TOP
TOPAZ

FABRICS: HELIUM 2.0, PISTON 230, 100% POLYESTER
FABRIC METRICS: 1.30 OZ/YD², 44 G/M²
SIZES: XS-XL



WIND
RESISTANT



WATER
RESISTANT



PACKABLE
STORAGE



REFLECTIVE



STANDARD
FIT

EVO ZAP 2 JACKET

U709030F

Maximum visibility with Zap Tech combined with breathable water-resistant protection and room for layering.

- Zap Tech offers full garment illumination through millions of micro-glass lenses that light up at night with artificial light
- Water-resistant breathable fabric combined with MidZero Zap side panels for added mobility
- Stretch trim at wrists and hem
- Zippered rear pocket to store essentials
- Reflective logos at front and back



BLK
BLACK

BKP
BRIGHT PINK

FABRICS: ZAP LT WOVEN, MIDZERO ZAP,
MIDZERO, 100% POLYESTER WITH MICROGLASS
BEAD APPLICATION
FABRIC METRICS: 2.78 OZ/YD², 94 G/M²
SIZES: S-2XL



BREATHABLE
FABRIC



WIND
RESISTANT



WATER
RESISTANT



ZAP TECH
VISIBILITY



STANDARD
FIT



BLK
BLACK



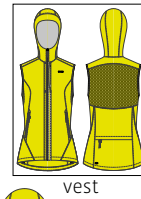
BKP
BRIGHT PINK

VERSA 2 JACKET

U702010F

Lightweight hooded shell ideal for changing conditions, transitions from jacket to vest in our modern Standard Fit.

- Body of jacket features a water-repellent front paired with a waterproof back
- Fully waterproof sleeve assembly easily removes via strategically placed magnets
- Adjustable waistcord and hook and loop secure cuffs for a dialed fit
- Zippered rear pocket for stowing sleeves and essentials
- Two zippered hand pockets to store essentials, one with inner phone pocket and media cord access



DNV
DEEP NAVY

BLK
BLACK

SNV
SUPERNOVA YELLOW

FABRICS: EVOTECH 2.0, FINOMESH, 100% POLYESTER

FABRIC METRICS: 2.86 OZ/YD², 97 G/M²

SIZES: XS-XL



MOISTURE TRANSFER



BREATHABLE FABRIC



WIND RESISTANT



WATER RESISTANT



MAGNET TECHNOLOGY



CONNECT



STANDARD FIT

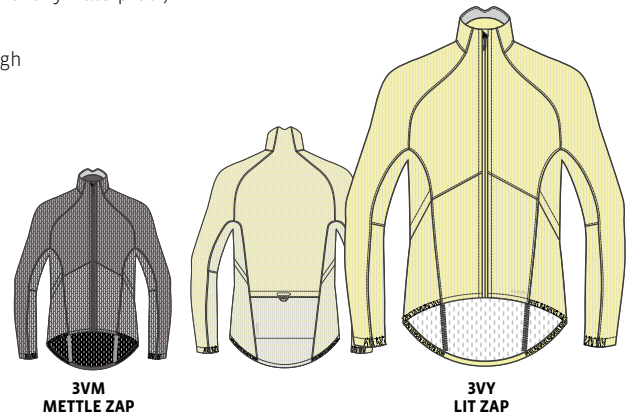
ZAP BIKE JACKET

U719000F

The ultimate jacket for dark and wet commuting conditions. Maximum visibility and fully waterproof, with underarm zips for ventilation.

- Waterproof, PU coated fabric with Zap Tech for full garment illumination through millions of micro-glass lenses that light up at night with artificial light
- Water resistant front zip with garage
- Rear pocket for storing ride essentials
- Side zips for venting

FABRIC: ZAP PU WOVEN
100% POLYESTER WITH MICROGLASS BEAD APPLICATION,
100% POLYURETHANE COATING BACK
FABRIC METRICS: 3.98 OZ/YD², 133 G/M²
SIZES: XS-XL



**3VM
METTLE ZAP**



**3VY
LIT ZAP**

RESISTOR PANTS

U460010U

Articulated, waterproof cycling pants for everything from your daily commute to overnight trips.

- Dri Shield is a 3-layer fabric with 4-way stretch that delivers amazing mobility
- Bonded woven fabric on the face and knit fabric on the back provide durability and comfort
- Paneled 360-degree Zap Tech on legs for luminous reflectivity when struck by artificial light
- Zippered side pocket for essentials and two side water-resistant zippers to provide ventilation when needed
- Fully seam sealed and waterproof
- Ankle zippers with snap adjustment
- Waistband retention system for an adjustable fit
- Unisex sizing

FABRICS: DRI SHIELD, ZAP WOVEN
100% POLYESTER FACE & BACK, 100% POLYURETHANE
FABRIC METRICS: 5.01 OZ/YD², 170 G/M²
UNISEX SIZING: XS-2XL



**3VB
BLACK ZAP**



MEN'S CYCLING

RS PRO JERSEY

U575530M

Our race cut jersey made of lightweight supple fabrics, offering exceptional performance in a modern design that fits snug to the body.

- Full Moon 2.0 fabric offers breathability, moisture control and UPF 50 protection
- Full Moon fabric at sleeve and side panel provides ventilation with UPF 15 sun protection
- Back hem with bonded gripper for a thin, clean finish
- Traditional three rear pocket design with gusset to store your ride essentials
- Laser-style finished gripper band at sleeve opening

FABRICS: FULL MOON 2.0, FULL MOON, AEROBAND,
86% POLYESTER 14% SPANDEX
FABRIC METRICS: 3.98 OZ/YD², 135 G/M²
SIZES: S-2XL



9XA
RED URBAN ARCHITECTURE

9XB
NAVY MAGIC SKY



9XA
RED URBAN ARCHITECTURE



9XB
NAVY MAGIC SKY

EVOLUTION ZAP JERSEY

U576010M

Our Standard Fit performance jersey that focuses on comfort, accommodating the widest variety of riders.

- Dri Tech fabric provides moisture management and breathability
- Full length zipper for ventilation
- Three elastic back pockets to store your essentials with Zap reflectivity for visibility
- Provides UPF 30 sun protection



9WZ
AZUR CITY
ARCHITECTURE

9WV
PANORAMIC
LANDSCAPE

9WR
RED DARK
SKY

9WY
BLACK URBAN
ARCHITECTURE

FABRICS: DRI TECH, DRI TECH TD, ZAP 300,
100% POLYESTER
FABRIC METRICS: 3.24 OZ/YD2, 110 G/M2
SIZES: S-2XL



MOISTURE
TRANSFER



BREATHABLE
FABRIC



SUN
PROTECTION



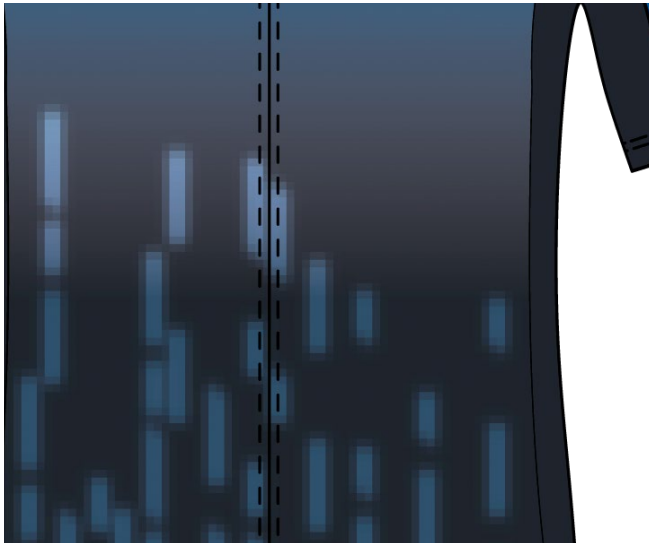
ZAP TECH
VISIBILITY



STANDARD
FIT



DIY



9WZ
AZUR CITY
ARCHITECTURE



9WV
PANORAMIC
LANDSCAPE



9WR
RED DARK
SKY



9WY
BLACK URBAN
ARCHITECTURE

EVOLUTION ICE JERSEY

U576020M

Strategic Icefil® fabric placement keeps you dry and cool on the hottest days in this understated, Standard Fit jersey.

- Icefil® side panels are moisture-reactive and cool your skin temperature
- Full length zipper for ventilation
- Three rear pockets with an additional zippered pocket to secure your valuables
- Elastic silicone gripper at hem for a secure fit



FABRICS: XO DRY, ICEFIL®, 91% POLYESTER 9% SPANDEX
FABRIC METRICS: 3.45 OZ/YD2, 117 G/M2
SIZES: S-2XL

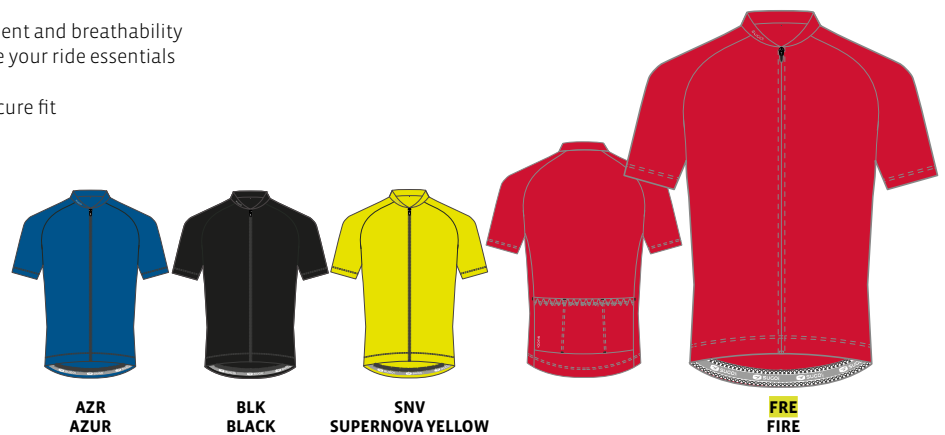


ESSENCE JERSEY

U575560M

Our Standard Fit jersey with essential performance features that focus on comfort.

- Essence fabric provides moisture management and breathability
- Traditional three rear pocket design to store your ride essentials
- Full length zipper for ventilation
- Elastic silicone gripper at back hem for a secure fit



FABRIC: ESSENCE, 100% POLYESTER
FABRIC METRICS: 4.15 OZ/YD2, 140 G/M2
SIZES: S-2XL



ARD JERSEY

U580060M

NEW

Our new All-Road Jersey was designed with a sleek, modern look and versatility in mind for urban rides.

- Active Melange is a lightweight striped fabric for breathability and luxurious next-to-skin feel
- Stylish collar with discreet snap closure, for a refined look and plenty of ventilation when needed
- Reflective elements for low-light conditions
- Center back pocket with invisible zip for secure storage



FABRIC: ACTIVE MELANGE, 87% NYLON 8% POLYESTER 5% SPANDEX
FABRIC METRICS: 4.72 OZ/YD2, 160 G/M2
SIZES: S-2XL



RS PRO BIB SHORTS

U391000M

Built for long days in the saddle. Multi-fabric construction with impeccable comfort and fit, anchored by a 3D chamois design with Cradle construction.

- Firo fabric with outstanding wicking properties and breathability provides great muscle support and shape recovery
- Ultra Aero fabric at outer thighs for maximum aero efficiency
- Formula FX Chamois with Cradle construction and Poron® foam at sit bones for enhanced performance
- Infused silicone gripper leg band for a clean, smooth fit

FABRICS: FIRO, ULTRA AERO S, MOBIL MESH, AEROBAND,
78% NYLON 22% SPANDEX
FABRIC METRICS: 5.90 OZ/YD², 200 G/M²
CHAMOIS: MEN'S FORMULA FX
SIZES: S-2XL



RS PRO SHORTS

U381000M

Built for long days in the saddle. Multi-fabric construction with impeccable comfort and fit, anchored by a 3D chamois design with Cradle construction.

- Firo fabric with outstanding wicking properties and breathability provides great muscle support and shape recovery
- Ultra Aero fabric at outer thighs for maximum aero efficiency
- Formula FX Chamois with Cradle construction and Poron® foam at sit bones for enhanced performance
- Infused silicone gripper leg band for a clean, smooth fit

FABRICS: FIRO, ULTRA AERO S, AEROBAND,
78% NYLON 22% SPANDEX
FABRIC METRICS: 5.90 OZ/YD², 200 G/M²
CHAMOIS: MEN'S FORMULA FX
SIZES: S-2XL



RS CENTURY ZAP BIB SHORTS

U391010M

The ultimate endurance bib shorts with storage pockets and Zap accents for maximum function and visibility on long rides.

- Firo fabric with outstanding wicking properties and breathability provides great muscle support and shape recovery
- Ultra Aero fabric at outer thighs for maximum aero efficiency
- Mobil Mesh bib for superior ventilation and support
- Formula FX Chamois with Cradle construction and Poron® foam at sit bones for enhanced performance
- Zap leg band with silicone gripper provides slip-free comfort and high visibility during night rides
- Extra stow pockets at thighs for easy access and secure storage

FABRICS: FIRO, ULTRA AERO S, MOBIL MESH, ZAP AEROBAND
78% NYLON 22% SPANDEX
FABRIC METRICS: 5.90 OZ/YD², 200 G/M²
CHAMOIS: MEN'S FORMULA FX
SIZES: S-2XL



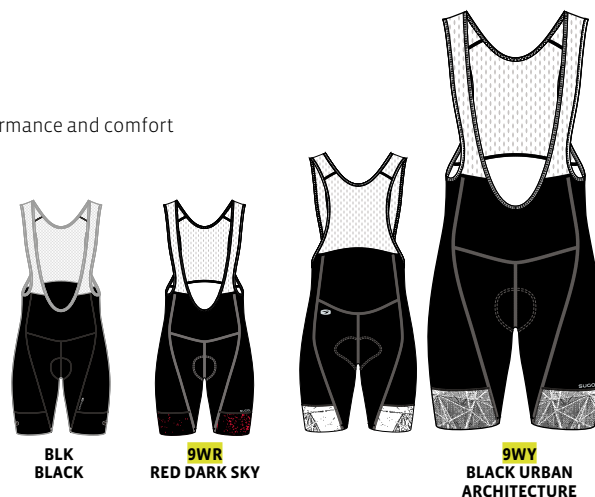
EVOLUTION BIB SHORTS / EVOLUTION PRT BIB SHORTS

U392000M / U392020M

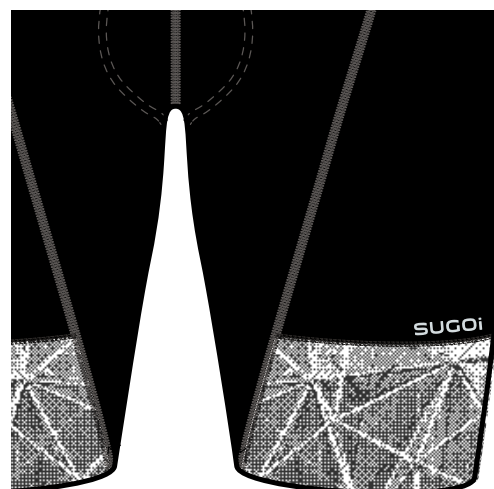
Performance-tailored, feature-filled and value-packed bib shorts anchored by a 3D chamois design with Cradle construction.

- Evo Plus is a moisture-wicking and breathable fabric for high output performance and comfort
- Mobil Mesh bib for superior ventilation and support
- RC Pro Chamois with 3D construction for increased comfort in the saddle
- MAB® PowerBand silicone leg gripper provides slip-free comfort without constricting your thighs

FABRICS: EVOPLUS, MOBIL MESH, 81% NYLON 19% SPANDEX
 FABRIC METRICS: 8.24 OZ/YD², 280 G/M²
 CHAMOIS: MEN'S RC PRO
 SIZES: S-2XL



9WR
RED DARK SKY



9WY
BLACK URBAN ARCHITECTURE

EVOLUTION SHORTS / EVOLUTION PRT SHORTS

U382000M / U382050M

Performance-tailored, feature-filled and value-packed shorts, anchored by a 3D chamois design with Cradle construction.

- Evo Plus is a moisture-wicking, breathable fabric for high output performance and comfort
- Flat seams and eight-panel design combine for a low-profile, contoured fit
- RC Pro chamois with 3D construction for increased comfort in the saddle
- MAB® PowerBand silicone leg gripper provides slip-free comfort without constricting your thighs

FABRIC: EVOPLUS, 81% NYLON 19% SPANDEX
 FABRIC METRICS: 8.24 OZ/YD², 280 G/M²
 CHAMOIS: MEN'S RC PRO
 SIZES: S-2XL



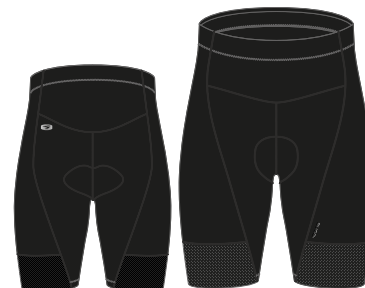
EVOLUTION ZAP SHORTS

U382040M

Performance-tailored, feature-filled and value-packed with high-visibility Zap leg bands to keep you riding confidently in low-light conditions.

- Evo Plus is a moisture-wicking, breathable fabric for high output performance and comfort
- Flat seams and eight-panel design combine for a low-profile, contoured fit
- RC Pro chamois with 3D construction for increased comfort in the saddle
- Zap leg band with silicone gripper provides slip-free comfort and high visibility during night rides

FABRICS: EVOPLUS, ZAP AEROBAND, 81% NYLON 19% SPANDEX
FABRIC METRICS: 8.24 OZ/YD², 280 G/M²
CHAMOIS: MEN'S RC PRO
SIZES: S-2XL



BLK
BLACK



ESSENCE SHORTS

U382060M

Equip yourself with essential performance features that focus on keeping you comfortable in the saddle.

- Triflex emboss fabric for moisture-wicking and supportive stretch
- Comfort waistband construction and six-panel design keep shorts in place
- RC 100 Chamois with Cradle construction for all-day comfort in the saddle

FABRIC: TRIFLEX EMOSS, 85% NYLON 15% SPANDEX
FABRIC METRICS: 6.54 OZ/YD², 221 G/M²
CHAMOIS: RC 100 CHAMOIS
SIZES: S-2XL



BLK
BLACK



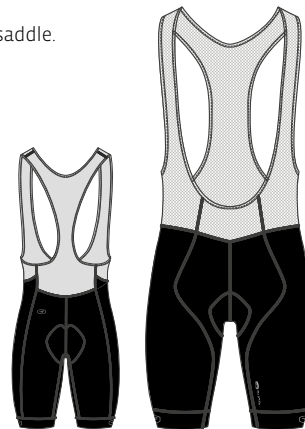
CLASSIC BIB SHORTS

U394000M

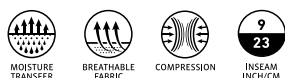
Enjoy the true comfort of proper cycling bib shorts. The entry-level Classic Bib Shorts will keep you happy in the saddle.

- Piston 230 compression technology for lower body support and performance
- Mobil Mesh bib for superior ventilation and support
- RC 100 Chamois provides versatile comfort
- Self-fabric folded leg band without silicone gripper

FABRICS: PISTON 230, MOBIL MESH, 72% NYLON 28% SPANDEX
FABRIC METRICS: 6.80 OZ/YD², 230 G/M²
CHAMOIS: MEN'S RC 100
SIZES: S-2XL



BLK
BLACK



CLASSIC SHORTS

U384000M

Enjoy the true comfort of proper cycling shorts. The entry-level Classic Shorts will keep you happy in the saddle.

- Piston 230 compression technology for lower body support and performance
- Soft waistband elastic and six-panel design keeps shorts properly positioned
- RC 100 chamois provides versatile comfort
- Self-fabric folded leg band without silicone gripper

FABRIC: PISTON 230, 72% NYLON 28% SPANDEX
FABRIC METRICS: 6.80 OZ/YD², 230 G/M²
CHAMOIS: MEN'S RC 100
SIZES: S-2XL



BLK
BLACK

ARD SHORTS

U350040M

NEW

Designed for any adventure on two-wheels, our All-Road Shorts are casually styled and packed with features like a removable liner with our RC 100 chamois and secure storage.

- 4-way stretch Mobil Shell provides comfort and durability while pedaling
- Seamless crotch panel
- Two front hand pockets with an inner zippered security pocket for secure storage
- Belt loops
- Hidden front zip fly with snap button and hook and loop closure
- Cycling-specific design and fit
- Removable liner with RC 100 chamois
- Reflective elements for low-light conditions

FABRIC: MOBIL, MOBIL MESH 87% POLYESTER 13% SPANDEX
FABRIC METRICS: 4.00 OZ/YD², 136 G/M²
CHAMOIS: MEN'S RC 100
SIZES: S-2XL
INSEAM: 11.5"/29.5CM



BLK
BLACK

ESP
ESPRESSO

OFF GRID 2 SHORTS

U350050M

NEW

Ultra-durable and with a water-resistant coating, these slim-fitting 4-way stretch shorts are perfect for all-road riding and bikepacking adventures alike, now with a removable liner and chamois included.

- Core Flex Lite is a durable mid-weight woven fabric offering 4-way stretch with a DWR finish
- Seamless crotch panel
- Two zippered hand pockets and one side zippered stow pocket to secure your ride essentials
- Waistband retention system for an adjustable fit
- Cycling-specific design and fit
- Removable liner with RC Pro chamois
- Reflective elements for low-light conditions

FABRIC: CORE FLEX LITE, MOBIL MESH 90% NYLON 10% SPANDEX
FABRIC METRICS: 5.00 OZ/YD², 170 G/M²
CHAMOIS: MEN'S RC PRO
SIZES: S-2XL
INSEAM: 11.5"/29.5CM



BLK
BLACK

MET
METTLE

ESP
ESPRESSO

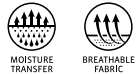
RC PRO LINER

U190010M

Lightweight mesh liner with integrated RC Pro Chamois to wear underneath baggy shorts or pants.

- Moisture-wicking comfort elastic waistband and flat seams for a low-profile fit
- RC Pro Chamois for all-day comfort in the saddle
- Signature leg gripper provides slip-free comfort without constricting your thighs

FABRIC: MOBIL MESH
84% POLYESTER 16% SPANDEX
FABRIC METRICS: 4.52 OZ/YD², 153 G/M²
CHAMOIS: MEN'S RC PRO
SIZES: S-2XL



BLK
BLACK

STASH JACKET

U705030M

Essential packable rain and wind shell stows easily to arm you against possible showers and chilly descents.

- Helium 2.0 is a lightweight woven fabric providing effective wind and water resistance
- Strategically placed Piston 230 fabric under the sleeves for increased breathability and stretch
- Rear zippered pocket contains a stuffable pouch for the jacket that converts into a saddle bag
- Drop tail hem with elastic gripper for increased protection and a secure fit



BLK
BLACK

SNV
SUPERNOVA YELLOW

FRE
FIRE

FABRICS: HELIUM 2.0, PISTON 230
100% POLYESTER
FABRIC METRICS: 1.30 OZ/YD², 44 G/M²
SIZES: S-2XL



EVO ZAP 2 JACKET

U709030M

Maximum visibility with Zap Tech combined with breathable water-resistant protection and room for layering.

- Zap Tech offers full garment illumination through millions of micro-glass lenses that light up at night with the help of motorists headlights
- Water-resistant breathable fabric combined with MidZero Zap side panels for added mobility
- Stretch trim at wrists and hem
- Zippered rear pocket to store essentials
- Reflective logos at front and back



**BLK
BLACK**

**SNV
SUPERNOVA YELLOW**

FABRICS: ZAP LT WOVEN, MIDZERO ZAP, MIDZERO
FABRIC METRICS: 2.78 OZ/YD², 94 G/M²
SIZES: S-2XL



**BLK
BLACK**



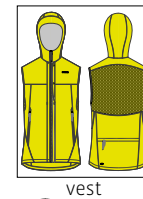
**SNV
SUPERNOVA YELLOW**

VERSA 2 JACKET

U702010M

Lightweight hooded shell ideal for changing conditions, transitions from jacket to vest in our modern Standard Fit.

- Body of jacket features a water-repellent front paired with a waterproof back
- Fully waterproof sleeve assembly easily removes via strategically placed magnets
- Adjustable waist-cord and hook and loop secure cuffs for a dialed fit
- Zippered rear pocket for stowing sleeves and essentials
- Two zippered hand pockets to store essentials, one with inner phone pocket and media cord access



vest



**DNV
DEEP NAVY**

**BLK
BLACK**

**SNV
SUPERNOVA YELLOW**

FABRICS: EVOTECH 2.0, FINOMESH, 100% POLYESTER
FABRIC METRICS: 2.86 OZ/YD², 97 G/M²
SIZES: S-2XL



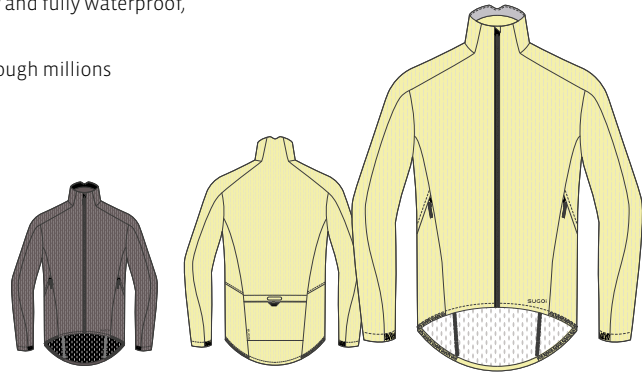
ZAP BIKE JACKET

U719000M

The ultimate jacket for dark and wet commuting conditions. Maximum visibility and fully waterproof, with underarm zips for ventilation.

- Waterproof, PU coated fabric with Zap Tech for full garment illumination through millions of micro-glass lenses that light up at night with artificial light
- Water resistant front zip with garage
- Rear pocket for storing ride essentials
- Side zippers for venting

FABRIC: ZAP WOVEN, 100% POLYESTER WITH MICROGLASS BEAD APPLICATION, 100% POLYURETHANE COATING BACK
 FABRIC METRICS: 3.98 OZ/YD², 133 G/M²
 SIZES: S-2XL



3VM
METTLE ZAP

3VY
LIT ZAP



3VM
METTLE ZAP



3VY
LIT ZAP

RESISTOR PANTS

U460010U

Articulated, waterproof cycling pants for everything from your daily commute to overnight trips.

- Dri Shield is a 3-layer fabric with 4-way stretch that delivers amazing mobility
- Bonded woven fabric on the face and knit fabric on the back provide durability and comfort
- Paneled 360-degree Zap Tech on legs for luminous reflectivity when struck by artificial light
- Zippered side pocket for essentials and two side water-resistant zippers to provide ventilation when needed
- Fully seam sealed and waterproof
- Ankle zippers with snap adjustment
- Waistband retention system for an adjustable fit
- Unisex sizing

FABRICS: DRI SHIELD, ZAP WOVEN
 100% POLYESTER FACE & BACK, 100%
 POLYURETHANE
 FABRIC METRICS: 5.01 OZ/YD², 170 G/M²
 UNISEX SIZING: XS-2XL



3VB
BLACK ZAP



TRIATHLON

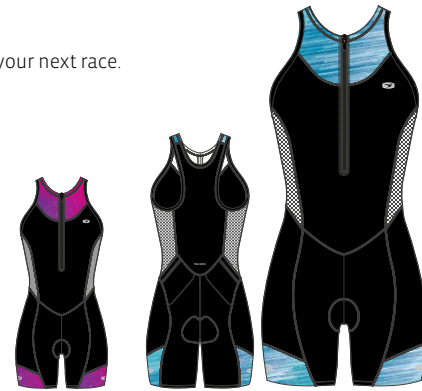
RPM TRI SUIT

U293010F

Feature-filled and value-packed high performance tri suit offering great fit and comfort to take you to your next race.

- Zone construction features Speed Mesh side panels for enhanced breathability
- Front zip for ventilation and racer back styling for increased comfort and support
- TriLite 3 Chamois for lightweight comfort and support
- Self-fabric folded hem band without silicone gripper
- Two easy-access rear pockets for storing essentials

FABRICS: TRIFLEX, SPEED MESH,
85% NYLON 15% SPANDEX
FABRIC METRICS: 6.54 OZ/YD², 221 G/M²
CHAMOIS: WOMEN'S TRILITE 3
SIZES: XS-XL



9XG
PINK MAGIC SKY

9XD
WATER FLUIDITY

RPM TRI TANK

U203050F

NEW

Essential comfort and support from training to race day. This performance tank keeps you cool and comfortable.

- Zone construction features Speed Mesh side panels for enhanced breathability
- Front zip for ventilation and innovative armhole binding construction for maximum comfort
- Two easy-access rear pockets and dropped back hem for enhanced coverage

FABRIC: TRIFLEX, SPEED MESH, 85% NYLON 15% SPANDEX
FABRIC METRICS: 6.54 OZ/YD², 221 G/M²
SIZES: XS-2XL



9XG
PINK MAGIC SKY

9XD
WATER FLUIDITY

RPM TRI RACERBACK

U203040F

This breathable, supportive tank has a higher neckline for sun protection and a racer back design for ultimate mobility.

- TriFlex fabric for moisture wicking and supportive stretch
- Racer back for maximum range of motion and Speed Mesh down center back for extra cooling
- Two easy-access rear pockets and dropped back hem for enhanced coverage
- Supportive inner shelf bra

FABRICS: TRIFLEX, SPEED MESH, 85%
NYLON 15% SPANDEX
FABRIC METRICS: 6.54 OZ/YD², 221 G/M²
SIZES: XS-XL



9XG
PINK MAGIC SKY

9XD
WATER FLUIDITY

RPM TRI SHORTS / RPM PRT TRI SHORTS

U212010F / U213020F

NEW

Feature-filled and value-packed. These flattering tri shorts deliver on performance, taking you from high-octane training to race day.

- TriFlex fabric for moisture-wicking and supportive stretch
- Flattering comfort waistband features integrated rear fuel pockets
- Invisible Chamois construction eliminates stitch lines around the chamois for a flattering silhouette
- Self-fabric folded leg band without silicone gripper

FABRIC: TRIFLEX, 85% NYLON 15% SPANDEX
FABRIC METRICS: 6.54 OZ/YD², 221 G/M²
CHAMOIS: WOMEN'S TRILITE 3
SIZES: XS-2XL
INSEAM: 6"/15CM



BLK
BLACK

9XG
PINK MAGIC SKY

9XD
WATER FLUIDITY



9XG
PINK MAGIC SKY



9XD
WATER FLUIDITY

RPM AERO TRI SUIT

U293040M

NEW

Take your race day to the next level with the RPM Aero Tri Suit, designed with breathable, quick-drying, aerodynamic fabrics and construction, and plenty of storage for fuel and essentials.

- Evolution Aero fabric improves aerodynamics, is quick-drying and lightweight
- Firo fabric with outstanding wicking properties and breathability provides great muscles support and shape recovery
- Chlorine-resistant, quick-drying and moisture management
- Ergonomic
- Tri-specific anti-chafing seam placement
- Large kangaroo-style center back pocket
- Two leg pockets for additional storage
- Reflective logos
- TriLite Pro Chamois for lightweight comfort and support
- Laser finished gripper band at sleeve and leg opening provides slip-free comfort
- Inner zipper flap with garages improve comfort and durability

FABRIC: EVOLUTION AERO, SPEED MESH, FIRO, AEROBAND
 FABRIC METRICS: XX OZ/YD², XX G/M²
 CHAMOIS: MEN'S TRILITE PRO
 SIZES: S-2XL
 INSEAM: 10.5"/26.5CM



9XF
AZURE WATER
FLUIDITY



9XA
RED URBAN
ARCHITECTURE

RPM TRI TANK

U203030M

Essential comfort and support from training to race day. This performance tank keeps you cool and comfortable.

- Zone construction features Speed Mesh side panels for enhanced breathability
- Front zip for ventilation and innovative armhole binding construction for maximum comfort
- Two easy-access rear pockets and dropped back hem for enhanced coverage

FABRICS: TRIFLEX, SPEED MESH, 85% NYLON 15% SPANDEX
 FABRIC METRICS: 6.54 OZ/YD², 221 G/M²
 SIZES: S-XL



9XF
AZURE WATER
FLUIDITY



9XA
RED URBAN
ARCHITECTURE

RPM TRI SHORTS / RPM PRT TRI SHORTS

U212010 / U213020M

NEW

Feature-filled and value-packed. These flattering tri shorts deliver on performance, taking you from high-octane training to race day.

- TriFlex fabric for moisture wicking and supportive stretch
- Waistband with integrated rear fuel pockets and inner drawcord for secure fit
- TriLite 3 Chamois for lightweight comfort and support
- Self-fabric folded leg band without silicone gripper

FABRIC: TRIFLEX, 85% NYLON 15% SPANDEX
 FABRIC METRICS: 6.54 OZ/YD², 221 G/M²
 CHAMOIS: MEN'S TRILITE 3
 SIZES: S-2XL
 INSEAM: 7.5"/19CM



BLK
BLACK



9XF
AZURE WATER
FLUIDITY



9XA
RED URBAN
ARCHITECTURE



9XF
AZURE WATER
FLUIDITY



9XA
RED URBAN
ARCHITECTURE



WOMEN'S ACTIVE

COAST TANK

U550030F

This ultra-soft tank is perfect for active hot weather days, with a high-performance design and contemporary styling.

- Dri Active Jersey is an ultra-soft, moisture-wicking knit material
- Keyhole opening at back for added ventilation and style
- Flat seams for increased comfort and abrasion resistance



FABRIC: DRI ACTIVE JERSEY, 83% POLYESTER 11% RAYON
6% SPANDEX
FABRIC METRICS: 4.12 OZ/YD2, 140 G/M2
SIZES: XS-XL



PRISM S/S

U500020F

Stay cool in this lightweight short sleeve top made with cooling mesh for ventilated comfort in a flattering Standard Fit.

- Chill Mesh offers cooling performance using Icefil® technology
- Smart seam construction to increase movement and reduce abrasion



FABRIC: CHILL MESH, 91% POLYESTER 9% SPANDEX
FABRIC METRICS: 4.12 OZ/YD2, 140 G/M2
SIZES: XS-XL



PRISM 2-IN-1 SHORTS

U301080F

These 2-in-1 running shorts provide supportive inner shorts that add a little extra coverage with an airy outer layer to keep you comfortable.

- Active Flex outer liner is a lightweight, four-way stretch woven fabric
- Fitted-in liner made with Chill Mesh which offers lightweight, cooling performance
- Wide comfort waistband with front key pocket



FABRICS: ACTIVE FLEX, ACTIVE PLUSH, CHILL MESH,
90% POLYESTER 10% SPANDEX
FABRIC METRICS: 3.30 OZ/YD2, 112 G/M2
SIZES: XS-XL



PRISM TRAINING SHORTS

U308010F

Versatile running short tights that provide great close-to-the-body support with a plush-feeling fabric that repels moisture quickly.

- Active Plush is a circular knit fabric that provides superior moisture wicking and breathability
- Wide comfort waistband with rear key pocket
- Two side pockets with fold-over flap to securely store essentials

FABRIC: ACTIVE PLUSH, 78% POLYESTER 22% SPANDEX
FABRIC METRICS: 7.50 OZ/YD², 254 G/M²
SIZES: XS-XL



PRISM TIGHTS

U401010F

Technical performance tights that provide great fit with ample pocket storage and plush fabric.

- Active Plush is a circular knit fabric that provides superior moisture-wicking and breathability
- Wide comfort waistband with drawcord adjustment and inner key pocket
- Two side pockets to store media device and other essentials

FABRICS: ACTIVE PLUSH, POWER MESH, 78% POLYESTER 22% SPANDEX
FABRIC METRICS: 7.50 OZ/YD², 254 G/M²
SIZES: XS-XL



PRISM CROPS

U430520F

Technical performance crop tights that provide great fit with ample pocket storage and plush fabric.

- Active Plush is a circular knit fabric that provides superior moisture wicking and breathability
- Wide comfort waistband with rear key pocket
- Two side pockets with fold-over flap to securely store essentials

FABRICS: ACTIVE PLUSH, POWER MESH, 78% POLYESTER 22% SPANDEX
FABRIC METRICS: 7.50 OZ/YD², 254 G/M²
SIZES: XS-XL





FUSION CORE ZIP

U607020F

Incredibly soft and comfortable zip top provides lightweight warmth and moisture-wicking, worn on its own or layered with a jacket.

- Dri Active Core is a soft lightweight 4-way stretch knit fabric for incredible comfort
- Flat seams for increased comfort and abrasion-resistance
- Back side pocket with invisible zip securely stores essentials



FABRIC: DRI ACTIVE CORE, 90% POLYESTER 10% SPANDEX
 FABRIC METRICS: 4.87 OZ/YD², 165 G/M²
 SIZES: XS-XL



MOISTURE TRANSFER

BREATHABLE FABRIC

STANDARD FIT

BLK
BLACK

BRE
BREEZE

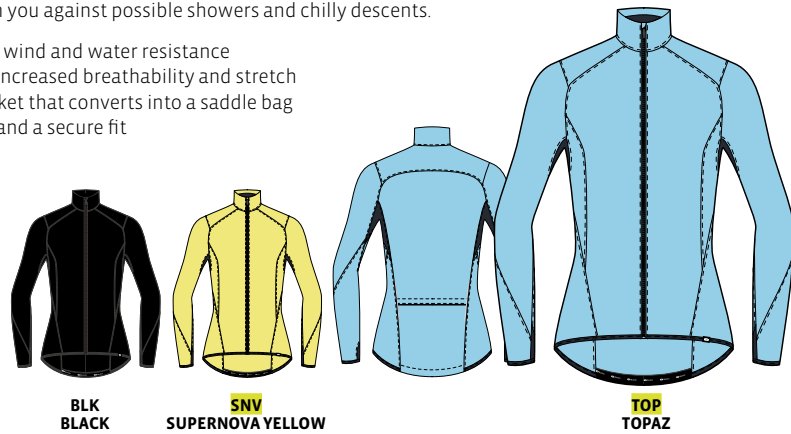
REG
REGAL

STASH JACKET

U705030F

Essential packable rain and wind shell that stows easily to arm you against possible showers and chilly descents.

- Helium 2.0 is a lightweight woven fabric providing effective wind and water resistance
- Strategically placed Piston 230 fabric under the sleeves for increased breathability and stretch
- Rear zippered pocket contains a stuffable pouch for the jacket that converts into a saddle bag
- Drop tail hem with elastic gripper for increased protection and a secure fit



FABRICS: HELIUM 2.0, PISTON 230, 100% POLYESTER
 FABRIC METRICS: 1.30 OZ/YD², 44 G/M²
 SIZES: XS-XL

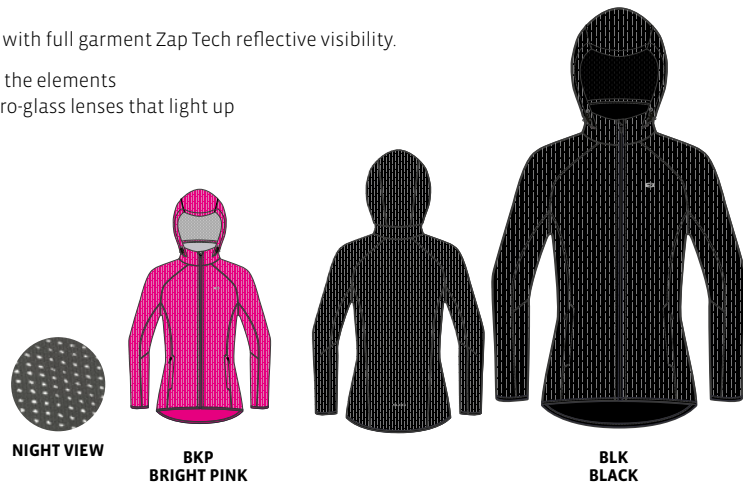


ZAP 2 TRAINING JACKET

U704010F

Don't be just seen, be noticed in this breathable performance jacket with full garment Zap Tech reflective visibility.

- Breathable and water-resistant fabric to keep you comfortable in the elements
- Zap Tech offers full garment illumination through millions of micro-glass lenses that light up at night with artificial light
- Stretch trim at wrists and hem
- Adjustable hood for added protection against bad weather
- Two hand pockets to store essentials
- Media management system on collar to secure headphone cords
- Reflective logos at front and back



FABRICS: ZAP LT WOVEN, 100% POLYESTER WITH
 MICROGLASS BEAD APPLICATION
 FABRIC METRICS: 2.80 OZ/YD², 95 G/M²
 SIZES: XS-XL



VERSA 2 JACKET

U702010F

Lightweight hooded shell ideal for changing conditions, transitions from jacket to vest in our modern Standard Fit.

- Body of jacket features a water-repellent front paired with a waterproof back
- Fully waterproof sleeve assembly easily removes via strategically placed magnets
- Adjustable waistcord and hook and loop secure cuffs for a dialed fit
- Zippered rear pocket for stowing sleeves and essentials
- Two zippered hand pockets to store essentials, one with inner phone pocket and media cord access



FABRICS: EVOTECH 2.0, FINOMESH, 100% POLYESTER
 FABRIC METRICS: 2.86 OZ/YD², 97 G/M²
 SIZES: XS-XL





MEN'S ACTIVE

TITAN S/S

U500100M

A warm weather short sleeve tee that combines multiple cooling fabrics to keep you cool during your workout.

- Lightweight cooling performance with an intelligent mix of Icefil® and Chill Mesh fabrics
- Smart seam construction to increase movement and reduce abrasion
- Rear zippered pocket to secure your essentials

FABRICS: CHILL MESH, ICEFIL®, 91% POLYESTER 9% SPANDEX
FABRIC METRICS: 4.12 OZ/YD2, 140 G/M2
SIZES: S-2XL



DNV
DEEP NAVY



GEN
GENERAL



TITAN 5-INCH SHORTS

U300540M

These lightweight shorts offer maximum mobility and stretch and include an Icefil® brief liner with smart pouch for added support and comfort.

- Active Flex is a lightweight, four-way stretch woven fabric for superior range of motion and comfort
- Icefil® brief liner with smart pouch construction for added support and comfort
- Rear zippered pocket to secure your essentials

FABRICS: ACTIVE FLEX, XO DRY, ICEFIL®, 90% POLYESTER 10% SPANDEX
FABRIC METRICS: 3.30 OZ/YD2, 112 G/M2
SIZES: S-2XL



BLK
BLACK



TITAN 7 INCH 2 IN 1 SHORTS

U301070M

Mid-length training shorts that provide great mobility and come with a technical boxer brief liner, constructed with Icefil® for added cooling.

- Active Flex is a lightweight, four-way stretch woven fabric for superior range of motion and comfort
- Boxer liner built with a smart pouch construction for added support and comfort
- Rear zippered pocket and boxer liner with media pocket with cord access port at hip
- Liner made with a combination of a soft, lightweight material and Icefil® fabric

FABRICS: ACTIVE FLEX, XO DRY, ICEFIL®,
90% POLYESTER 10% SPANDEX
FABRIC METRICS: 3.30 OZ/YD2, 112 G/M2
SIZES: S-2XL



BLK
BLACK



TITAN CORE ZIP

U607020M

This long sleeve top with collared zip neck provides lightweight warmth and mobility, worn on its own or as an essential layer.

- Dri Active Core is a soft lightweight 4-way stretch knit fabric for incredible comfort
- Flat seams for increased comfort and abrasion-resistance
- Back side pocket with invisible zip securely stores essentials

FABRIC: DRI ACTIVE CORE, 90% POLYESTER 10% SPANDEX
FABRIC METRICS: 4.87 OZ/YD2, 165 G/M2
SIZES: S-2XL



MET
METTLE

DEO
DEEP OLIVE

BLK
BLACK



AZR
AZURE

STASH JACKET

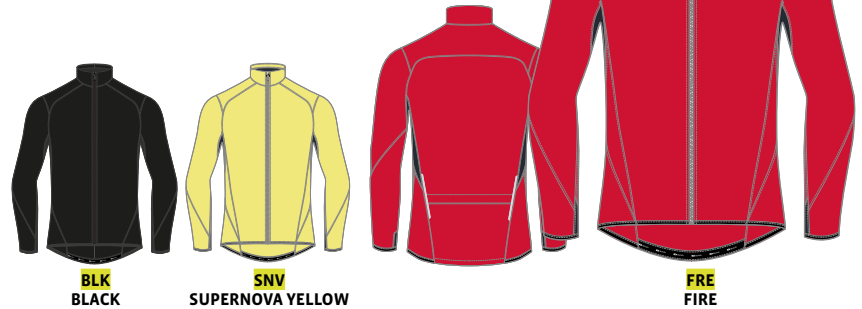
U705030M

Essential packable rain and wind shell stows easily to arm you against possible showers and chilly descents.

- Helium 2.0 is a lightweight woven fabric providing effective wind and water resistance
- Strategically placed Piston 230 fabric under the sleeves for increased breathability and stretch
- Rear zippered pocket contains a stuffable pouch for the jacket that converts into a saddle bag
- Drop tail hem with elastic gripper for increased protection and a secure fit



FABRICS: HELIUM 2.0, PISTON 230
100% POLYESTER
FABRIC METRICS: 1.30 OZ/YD², 44 G/M²
SIZES: S-2XL



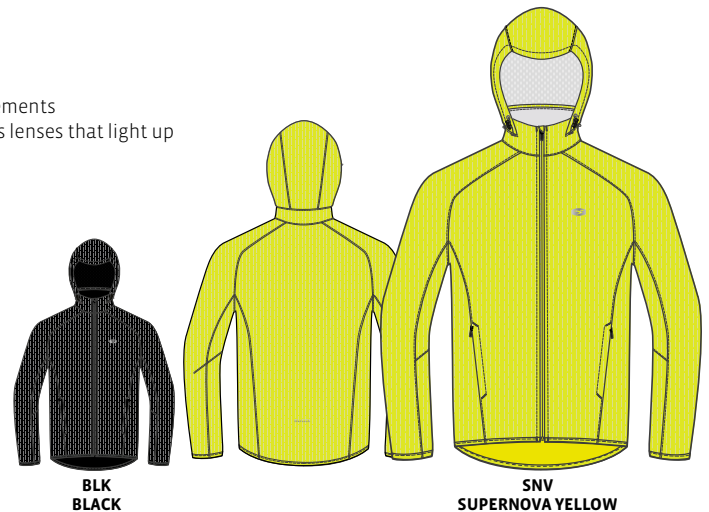
ZAP 2 TRAINING JACKET

U704010M

Don't be just seen, be noticed in this breathable performance jacket with Zap Tech for full garment reflective visibility.

- Breathable and water-resistant fabric to keep you comfortable in the elements
- Zap Tech offers full garment illumination through millions of micro-glass lenses that light up at night with the help of motorists headlights
- Stretch trim at wrists and hem
- Adjustable hood for added protection against bad weather
- Two hand pockets to store essentials
- Media management system on collar to secure headphone cords
- Reflective logos at front and back

FABRIC: ZAP LT WOVEN
FABRIC METRICS: 2.78 OZ/YD², 94 G/M²
SIZES: S-2XL

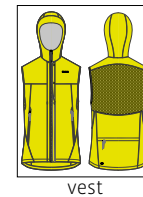


VERSA 2 JACKET

U702010M

Lightweight hooded shell ideal for changing conditions, transitions from jacket to vest in our modern Standard Fit.

- Body of jacket features a water-repellent front paired with a waterproof back
- Fully waterproof sleeve assembly easily removes via strategically placed magnets
- Adjustable waist-cord and hook and loop secure cuffs for a dialed fit
- Zippered rear pocket for stowing sleeves and essentials
- Two zippered hand pockets to store essentials, one with inner phone pocket and media cord access



FABRICS: EVOTECH 2.0, FINOMESH, 100% POLYESTER
FABRIC METRICS: 2.86 OZ/YD², 97 G/M²
SIZES: S-2XL





ACCESSORIES

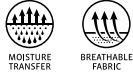
RS ZAP PRO

NEW

U910100M

- New Ergonomic padding design to increase comfort while riding
- GEL GO+ variable GEL, 5mm and 3 mm for comfort and good shock absorption to prevent fatigue
- Silicone print for better grip
- Perforated palm to increase breathability
- Air Fit fourchettes for breathability
- Lightweight Icona Power and Fullmoon mesh upper hand to increase breathability
- Double finger pullers for easy release
- Adjustable hook and loop wrist fastener
- Light weight Microfiber at thumb to release corporal humidity
- Reflective logo for safety

SIZES: S-XL



BLK
BLACK

W'S PERFORMANCE GLOVES

NEW

U910070F

- New Ergonomic padding design to increase comfort while riding
- GEL GO padding 4mm memory foam for comfort and good shock absorption
- Perforated palm to increase breathability
- Air Fit fourchettes for breathability
- Lightweight Icona Power mesh upper hand for good breathability
- Double finger pullers for easy release
- Adjustable hook and loop wrist fastener
- Light weight Microfiber at thumb to release corporal humidity
- Reflective logo for safety

SIZES: XS-L



BLK
BLACK

9WX
REGAL MAGIC SKY

W'S CLASSIC GLOVES

NEW

U910080F

- New Ergonomic padding design to increase comfort while riding
- GEL GO padding 4mm memory foam for comfort and good shock absorption
- Perforated palm to increase breathability
- Air Fit fourchettes for breathability
- Double finger pullers for easy release
- Light weight Microfiber at thumb to release corporal humidity
- Reflective logo for safety

SIZES: XS-L



BLK
BLACK

BRE
BREEZE

BKP
BRIGHT PINK

PERFORMANCE GLOVES

NEW

U910070M

- New Ergonomic padding design to increase comfort while riding
- GEL GO padding 4mm memory foam for comfort and good shock absorption
- Perforated palm to increase breathability
- Air Fit fourchettes for breathability
- Lightweight Icona Power mesh upper hand for good breathability
- Double finger pullers for easy release
- Adjustable hook and loop wrist fastener
- Light weight Microfiber at thumb to release corporal humidity
- Reflective logo for safety

SIZES: S-XL



BLK
BLACK

9XA
RED URBAN

CLASSIC GLOVES

NEW

U910080M

- New Ergonomic padding design to increase comfort while riding
- GEL GO padding 4mm memory foam for comfort and good shock absorption
- Perforated palm to increase breathability
- Air Fit fourchettes for breathability
- Double finger pullers for easy release
- Light weight Microfiber at thumb to release corporal humidity
- Reflective logo for safety

SIZES: S-XL



BLK
BLACK

AZR
AZURE

FRE
FIRE

ZAP TRAINING GLOVES

U914010U

Midweight thermal warmth and explosive visibility for your hands.

- MidZero fabric for supportive stretch and comfort
- Zap Tech upper offers illumination through millions of micro-glass lenses that light up at night when hit with artificial light
- Soft and highly absorbent thumb wiping surface and AX Suede Connect on thumb and forefinger
- Slip-on wrist cuff with pull tab fits perfectly without inhibiting movement

FABRIC: MIDZERO ZAP, 88% POLYESTER 12% SPANDEX WITH MICROGLASS BEAD APPLICATION

FABRIC METRICS: 10.60 OZ/YD², 360 G/M²

SIZES: XS-XL



BLK
BLACK

COOLER CAP

U930020U

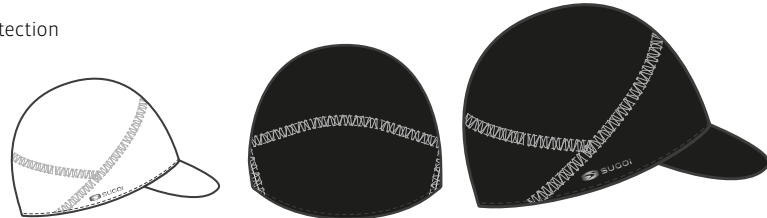
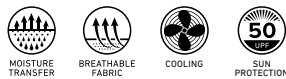
Our ultra-lightweight cap is ideal when worn under a helmet for hot weather rides, cooling your head and providing UPF 50+ protection.

- Icefil® material is moisture-reactive and cools your skin temperature to prevent overheating
- UPF 50+ rating for top level sun protection
- Lightweight brim reduces glare and provides additional sun protection

FABRIC: ICEFIL®, 92% POLYESTER 8% SPANDEX

FABRIC METRICS: 4.45 OZ/YD², 151 G/M²

SIZES: ONE SIZE



WHT
WHITE

BLK
BLACK

ZAP CYCLING CAP

U931000U

Classic cycling cap aesthetic paired with lightweight technical fabrics and the addition of highly reflective visibility on the brim.

- Mobil fabric combined with a six-panel design and a structured brim for a performance fit
- Zap reflective detailing on front bill and back panel for low-light and night time visibility

FABRICS: MOBIL, ZAP WOVEN, 87% POLYESTER 13% SPANDEX

FABRIC METRICS: 4.00 OZ/YD², 136 G/M²

SIZES: ONE SIZE



BLK
BLACK

ZAP 2.0 HELMET COVER

U999060U

The ultimate commuter helmet cover combines our fully reflective Zap Tech fabric with waterproof protection.

- Waterproof and fully reflective Zap Woven fabric is designed for explosive visibility in low light
- Two sizes to offer a wider range of fit possibilities

FABRIC: ZAP WOVEN, 100% POLYESTER WITH MICROGLASS BEAD APPLICATION,

100% POLYURETHANE COATING BACK

FABRIC METRICS: 3.55 OZ/YD², 120 G/M²

SIZES: S/M & L/XL



NIGHT VIEW

BLK
BLACK

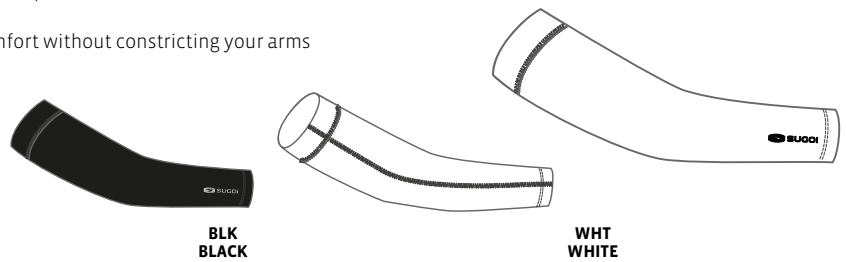
ARM COOLER

U990000U

Lightweight arm coolers made with a cooling fabric that provides UPF 50+ sun protection and comfortable grippers that ensure they stay locked in place.

- Icefil® material is moisture-reactive and cools your skin temperature
- UPF 50+ rating for top level sun protection
- MAB® PowerBand silicone gripper provides slip-free comfort without constricting your arms

FABRIC: ICEFIL®, 92% POLYESTER 8% SPANDEX
FABRIC METRICS: 4.45 OZ/YD2, 151 G/M2
SIZES: XS-XL



ZAP ARM WARMER

U993010U

Lightweight arm sleeves offered in black and a print that coordinates with this season's colours, with the addition of Zap reflective visibility to keep you seen.

- FinoStretch for supportive stretch comfort paneled with Zap reflectivity for high visibility
- MAB® PowerBand silicone gripper provides slip-free comfort without constricting your arms
- Sublimated graphics to complete your riding kit

FABRICS: FINOSTRETCH, ZAP 300, 92% POLYESTER 8% SPANDEX
FABRIC METRICS: 4.80 OZ/YD2, 162 G/M2
SIZES: XS-XL



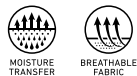
MIDZERO ARM WARMER

U994020U

Adjustable coverage for cold starts and changing conditions.

- MidZero is a full-stretch, moisture-wicking midweight fabric fleeced on the inside for superior comfort
- Gripper arm elastic keeps sleeves securely in place

FABRIC: MIDZERO, 87% POLYESTER 13% SPANDEX
FABRIC METRICS: 8.85 OZ/YD2, 300 G/M2
SIZES: XS-XL



ZAP ARM WARMER

U995010U

The essential MidZero Arm Warmers with the addition of visibility for low-light ride conditions.

- MidZero fabric for supportive stretch and comfort paneled with Zap reflectivity for high visibility
- Eliminate bunching with anatomic left and right arm-specific design

FABRICS: MIDZERO, MIDZERO ZAP, 87% POLYESTER 13% SPANDEX
FABRIC METRICS: 8.85 OZ/YD2, 300 G/M2
SIZES: XS-XL



ZAP KNEE WARMER

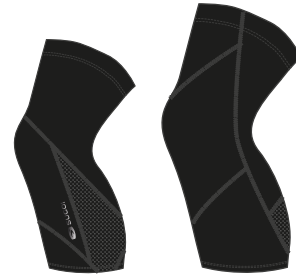
NEW

U999010U

Our essential MidZero Knee Warmers for thermal protection with added Zap reflective visibility.

- MidZero fabric for supportive stretch and comfort paneled with Zap reflectivity for high visibility
- Gripper elastic keeps warmers securely in place

FABRICS: MIDZERO, MIDZERO ZAP, 87% POLYESTER 13% SPANDEX
 FABRIC METRICS: 8.85 OZ/YD², 300 G/M²
 SIZES: XS-XL



BLK
BLACK

MIDZERO KNEE WARMERS

U998010U

Our MidZero Knee Warmers provide added thermal protection and are easily stored as your temperature rises.

- Full-stretch, moisture-wicking midweight base layer with fleeced inner side
- Knee hinge allows greater range of motion
- Gripper elastic keeps warmers securely in place

FABRIC: MIDZERO, 87% POLYESTER 13% SPANDEX
 FABRIC METRICS: 8.85 OZ/YD², 300 G/M²
 SIZES: XS-XL



BLK
BLACK

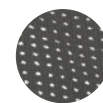
ZAP LEG WARMERS

U997010U

Our essential MidZero Leg Warmers with the addition of visibility for low-light ride conditions.

- MidZero fabric for supportive stretch and comfort paneled
- Zap Tech panel offer illumination through millions of micro-glass lenses that light up at night with artificial light
- Ankle zipper for easy slip-on with reflective ribbon to enhance visibility.
- Eliminate bunching with anatomic left and right leg-specific design

FABRICS: MIDZERO, MIDZERO ZAP, 87% POLYESTER 13% SPANDEX
 FABRIC METRICS: 8.85 OZ/YD², 300 G/M²
 SIZES: XS-XL



NIGHT VIEW



BLK
BLACK

LEG COOLER

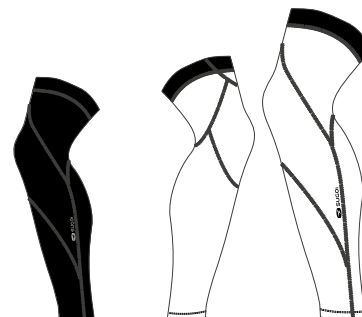
NEW

U991000U

Lightweight leg coolers made with a cooling fabric that provides UPF 50+ sun protection and comfortable grippers to ensure they stay locked in place.

- Icefil® material is moisture-reactive and cools your skin temperature
- MAB® PowerBand silicone gripper provides slip free comfort without constricting your thighs
- UPF 50+ rating for top level sun protection

FABRIC: ICEFIL®, 92% POLYESTER 8% SPANDEX
 FABRIC METRICS: 4.45 OZ/YD², 151 G/M²
 SIZES: XS-XL



WHT
WHITE

BLK
BLACK

MIDZERO LEG WARMER

U996010U

Mid-weight thermal leg protection with a superior multi-panel ergonomic design.

- MidZero is a full-stretch, moisture-wicking midweight base layer fleeced on the inside for amazing comfort
- Ankle zipper for easy slip-on with reflective ribbon to enhance visibility.
- Gripper elastic keeps warmers securely in place

FABRIC: MIDZERO, 87% POLYESTER 13% SPANDEX
FABRIC METRICS: 8.85 OZ/YD², 300 G/M²
SIZES: XS-XL



BLK
BLACK

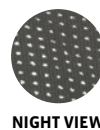
ZAP BOOTIES

95005U

Fully taped seam-sealed water protection, constructed with Zap Tech fabric for visibility- a modern staple for commuting and low-light training rides.

- A polyester construction with micro-glass lenses for durability and high visibility powered by motorists' headlights
- Hook-and-loop rear closure offers a wide range of fit depending on the shoe profile

FABRIC: ZAP WOVEN, 100% POLYESTER WITH MICROGLASS BEAD APPLICATION,
100% POLYURETHANE COATED BACK
FABRIC METRICS: 3.55 OZ/YD², 120 G/M²
SIZES: S-XL



NIGHT VIEW



BLK
BLACK

RESISTOR BOOTIES

U955000U

For cool and wet rides, these sleek booties offer great water resistance in a highly durable material for the rigors of off-season training.

- PU coated Resistor Fleece for warmth and lightweight wind and water protection
- Abrasion-resistant heel, toe and under shoe panels for increased durability
- Offset rear zip to reduce Achilles tendon irritation
- Wraparound seams for a comfortable fit
- Reflective heel pull-tab and silicone gripper elastic at cuff for a secure fit

SIZES: S-XL



BLK
BLACK

ZAP BOOTIES / RESISTOR PANTS



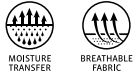
EVOLUTION LONG SOCKS

NEW

U941020U

Light weight Performance Technical Perfect calf height socks

- Perfect calf height for training or any others activities
- COOLMAX absorb 13 times less humidity than cotton fiber, dry quickly
- Nylon/Lycra for durability
- Powerband at arch for stability
- Cuff and for foot in mesh construction for maximum breathability and humidity control
- Flat toe seam to prevent irritation and increase comfort



60% COOLMAX® / 18% NYLON / 16% POLYESTER / 5% LYCRA®
SIZES: S/M - L/XL



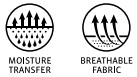
EVOLUTION SOCKS

NEW

U941030U

Light weight Performance Technical quarter socks

- Perfect for training or any others activities
- COOLMAX absorb 13 times less humidity than cotton fiber, dry quickly
- Nylon/Lycra for durability
- Powerband at arch for stability
- Cuff and for foot in mesh construction for maximum breathability and humidity control
- Flat toe seam to prevent irritation and increase comfort



61% COOLMAX® / 18% NYLON / 16% POLYESTER / 5% LYCRA®
SIZES: S/M - L/XL



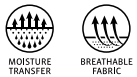
CLASSIC SOCKS

NEW

U942010U

Your essential hi Performance Technical quarter socks great for running and cycling

- Dry release Wool for good moisture wicking
- Nylon / Lycra for durability
- Powerband at arch for stability and compression
- For foot make in mesh construction for maximum breathability and humidity control
- Flat toe seam to prevent irritation and increase comfort



59% DRY RELEASE WOOL / 21% NYLON / 14% POLYESTER / 6% LYCRA
SIZES: S/M - L/XL



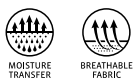
CLASSIC TAB SOCKS (3-PACKS)

NEW

U942000U

Low profile Technical performance socks for running and cycling just above shoe line

- Dry release Wool for good moisture wicking
- Nylon / Lycra for durability
- Powerband at arch for stability and compression
- For foot in construction mesh for maximum breathability and humidity control
- Flat toe seam to prevent irritation an increase comfort



63% DRY RELEASE WOOL / 20% NYLON / 14% POLYESTER / 3% LYCRA
SIZES: S/M - L/XL



FIT GUIDE

Sugoi offers two fit categories to complement a range of performance capabilities and body types.



SLIM FIT

Form-fitted to the body with performance articulation built for the ride position.



STANDARD FIT

Performance advantages with a slightly more generous torso.

Inseam measured on a person wearing medium size clothing.

IMPERIAL SIZING GUIDE							
WOMEN (IN)	XS	S	M	L	XL	2XL	3XL
BUST	31.5-33	33-35	35-37.5	37.5-40.5	40.5-43	43-45	-
WAIST	24.5-26	26-28	28-30.5	30.5-33.5	33.5-36	36-38	-
HIPS	34.5-36	36-38	38-40.5	40.5-43.5	43.5-46	46-48	-
INSEAM	28-28.5	28.5-29.5	29.5-30.5	30.5-31	31-31.5	31.5-32.5	-
MEN (IN)	XS	S	M	L	XL	2XL	3XL
CHEST	34-36	36-38	38-40	40-42.5	42.5-45.5	45.5-48	48-51
WAIST	28-30	30-32	32-34	34-37	37-40	40-43	43-46
HIPS	34-36	36-38	38-40	40-43	43-46	46-49	49-52
INSEAM	29.5-30.5	30.5-31.5	31.5-32.5	32.5-33.5	33.5-34	34-34.5	34.5-35.5
GLOVES							
WOMEN (IN)	-	6.5-7.25	7.25-8	8-8.75	-	-	-
MEN (IN)	-	7-8	8-9	9-9.75	9.75-10.5	10.5-12	-
SOCKS							
WOMEN	-	6-8	9-11	12+	-	-	-
MEN	-	5-7	8-10	11-13	-	-	-
BOOTIES							
UNISEX (IN)	-	7-8.5	8.5-10	10-11.5	11.5-13	-	-
HATS							
UNISEX (IN)	-	ONE SIZE		-	-	-	-
	-	S/M	L/XL	-	-	-	-
	-	21-22.5	22.5-24	-	-	-	-

METRIC SIZING GUIDE							
WOMEN (CM)	XS	S	M	L	XL	2XL	3XL
BUST	80-84	84-89	89-95	95-103	103-109	109-114	-
WAIST	62-66	66-71	71-77.5	77.5-85	85-91	91-97	-
HIPS	88-91	91-97	97-103	103-110.5	110.5-117	117-122	-
INSEAM	71-72.5	72.5-75	75-77.5	77.5-79	79-80	80-82.5	-
MEN (CM)	XS	S	M	L	XL	2XL	3XL
CHEST	86.5-91	91-97	97-102	102-108	108-115.5	115.5-122	122-129
WAIST	71-76	76-81	81-86	86-94	94-102	102-109	109-117
HIPS	86-91	91-96.5	96.5-102	102-109	109-117	117-124.5	124.5-132
INSEAM	75-77.5	77.5-80	80-82.5	82.5-85	85-86.5	86.5-88	88-90
GLOVES							
WOMEN (CM)	-	16.5-18.4	18.4-20.3	20.3-22.2	-	-	-
MEN (CM)	-	17.8-20.3	20.3-22.9	22.9-24.8	24.8-26.7	26.7-30.5	-
SOCKS							
WOMEN (EUR)	-	36-39	40-43	44-47	-	-	-
MEN (EUR)	-	36-39	40-43	44-47	-	-	-
BOOTIES							
UNISEX (CM)	-	40-42	42-44	44-46	46-48	-	-
HATS							
UNISEX (CM)	-	ONE SIZE		-	-	-	-
	-	S/M	L/XL	-	-	-	-
	-	53-57	57-61	-	-	-	-

ICON GLOSSARY



COMFORT GUARANTEE



CONNECT



FUEL POCKET



MAGNET TECHNOLOGY



REFLECTIVE



WATER RESISTANT



WATER PROOF



ANTI-ODOR



BREATHABLE FABRIC



COMPRESSION



COOLING



MOISTURE TRANSFER



PACKABLE STORAGE



SUN PROTECTION



SUN PROTECTION



WARM WICK



WIND RESISTANT



ZAP TECH VISIBILITY

SPRING / SUMMER ESSENTIAL FABRIC GUIDE

A quick reference guide to key fabrics from our Spring/Summer 2021 catalog.

ACTIVE MELANGE

Lightweight stripe fabric with high breathability and luxurious next-to-skin feel. Moisture control and UPF protection.

FABRIC BLEND: 87% NYLON 8% POLYESTER 5% SPANDEX
FABRIC METRICS: 4.72 OZ/YD²; 160 G/M²
FINISH: WICKING, UPF RATING 30

ACTIVE PLUSH

A circular knit fabric intended to keep athletes cool and dry. Repels moisture quickly with a soft next-to-skin inner face and great responsiveness to avoid wrinkling.

FABRIC BLEND: 78% POLYESTER 22% SPANDEX
FABRIC METRICS: 7.50 OZ/YD²; 254 G/M²
FINISH: WICKING

BB STRETCH

A moisture wicking and breathable fabric for high output performance and comfort.

FABRIC BLEND: 91% POLYESTER 9% SPANDEX
FABRIC METRICS: 4.20 OZ/YD²; 143 G/M²
FINISH: WICKING

CHILL MESH

Chill Mesh is a fully perforated fabric treated with Xylitol that produces a chilling effect when it comes in contact with your sweat.

FABRIC BLEND: 91% POLYESTER 9% SPANDEX
FABRIC METRICS: 4.12 OZ/YD²; 140 G/M²
FINISH: COOLING

CORE FLEX LITE

4-way stretch, durable lightweight woven fabric with a DWR finish to repel rain and mud.

FABRIC BLEND: 90% NYLON 10% SPANDEX
FABRIC METRICS: 5.00 OZ/YD²; 170 G/M²
FINISH: DWR

DRI ACTIVE JERSEY

Technical drirelease® blend. The unique blend of synthetic and natural fibers in drirelease® yarn actually accelerates the water release rate of our fabrics. Ultra-soft, moisture wicking material.

FABRIC BLEND: 83% POLYESTER 11% RAYON 6% SPANDEX
FABRIC METRICS: 4.12 OZ/YD²; 140 G/M²
FINISH: WICKING, QUICK DRY, ODOR CONTROL

DRI ACTIVE WOOL

With an optimum blend of wicking and fast-drying fibers, drirelease® wool provides extra warmth without extra weight, releasing moisture four times faster than merino wool.

FABRIC BLEND: 84% POLYESTER, 11% MERINO WOOL, 5% SPANDEX
FABRIC METRICS: 5.15 OZ/YD²; 175 G/M²
FINISH: WICKING, QUICK DRY, ODOR CONTROL

DRI SHIELD

A 3-layer fabric with woven face and knit back that provides 5,000 mm waterproof protection and a DWR finish.

FABRIC BLEND: 100% POLYESTER FACE AND BACK/
100% POLYURETHANE LAMINATE
FABRIC METRICS: 5.01 OZ/YD²; 170 G/M²
RATING: 5,000 MM WATERPROOF
MVTR: 5,000 G/M²/24 H
FINISH: C6 DWR

DRI TECH

A moisture wicking and breathable fabric for high output performance and comfort.

FABRIC BLEND: 100% POLYESTER
FABRIC METRICS: 3.24 OZ/YD²; 110 G/M²
FINISH: WICKING

ESSENCE

The new Essence fabric provides moisture management and breathability.

FABRIC BLEND: 100% POLYESTER
FABRIC METRICS: 4.12 OZ/YD²; 140 G/M²
FINISH: WICKING

EVOPLUS

Evo Plus is a moisture wicking and breathable fabric for high output performance and comfort.

FABRIC BLEND: 81% NYLON 19% SPANDEX
FABRIC METRICS: 8.24 OZ/YD²; 280 G/M²
FINISH: MOISTURE TRANSFER, SUN PROTECTION

EVOTECH 2.0

A 2.5-layer laminated fabric, woven with two-way stretch, 10,000 mm waterproof protection and DWR finish.

FABRIC BLEND: 100% POLYESTER / 100% POLYURETHANE LAMINATE
FABRIC METRICS: 3.10 OZ/YD²; 105 G/M²
RATING: 10,000 MM WATERPROOF
MVTR: 10,000 G/M²/24 H
FINISH: C6 DWR

FULL MOON 2.0

Lightweight performance fabric. High breathability with moisture control and UPF protection. Good stretch and recovery.

FABRIC BLEND: 86% POLYESTER 14% SPANDEX
FABRIC METRICS: 3.98 OZ/YD²; 135 G/M²
FINISH: WICKING, UPF RATING 50

HELIUM 2.0

Helium 2.0 is a lightweight woven fabric providing effective wind and water resistance.

FABRIC BLEND: 100% POLYESTER
FABRIC METRICS: 1.30 OZ/YD²; 44 G/M²
FINISH: WIND RESISTANT

HELIX

A soft, matte finished knit blended with spandex for complete and flexible recovery. The moisture wicking nylon yarns provide density without weight for a cool aerobic environment.

FABRIC BLEND: 88% NYLON 12% SPANDEX
FABRIC METRICS: 7.9 OZ/YD²; 268 G/M²
FINISH: WICKING

ICEFIL®

Icefil® material is moisture reactive using Xylitol application and cools your skin temperature with perspiration.

FABRIC BLEND: 86% NYLON 14% SPANDEX
FABRIC METRICS: 3.39 OZ/YD²; 115 G/M²
FINISH: COOLING, UPF RATING 50

MIDZERO

Full-motion stretch without bulk. The perfect mid-weight layer suitable for a wide range of temperatures. The soft, brushed inner face expedites moisture wicking and increases airflow, trapping body warmth next to the skin. An essential fabric that provides the foundation for SUGOI tights, mid-layers and outer layers across the collection.

FABRIC BLEND: 88% POLYESTER, 12% SPANDEX
FABRIC METRICS: 8.98 OZ/YD²; 304 G/M²
FINISH: WICKING

MOBIL

A stretch woven fabric that delivers excellent four-way stretch. Quick drying, Mobil provides free movement and extreme comfort without bagginess.

FABRIC BLEND: 87% POLYESTER 13% SPANDEX
FABRIC METRICS: 4.00 OZ/YD²; 136G/M²
FINISH: QUICK DRY

PISTON 230

Nylon spandex warp knit construction for supportive stretch and resilience. Compressive properties for improved muscle support with a dynamic carbon embossed pattern.

FABRIC BLEND: 72% NYLON 28% SPANDEX
FABRIC METRICS: 6.34 OZ/YD²; 215 G/M²
FINISH: UPF RATING 50

QUATTRO FLEX LITE

Four-way stretch woven water resistant fabric.

FABRIC BLEND: 90% POLYESTER 10% SPANDEX
FABRIC METRICS: 4.95 OZ/YD²; 168 G/M²
FINISH: DWR

TRIFLEX

Moisture wicking and supportive fabric.

FABRIC BLEND: 85% NYLON 15% SPANDEX
FABRIC METRICS: 6.54 OZ/YD²; 221 G/M²
FINISH: UPF RATING 50

TRIFLEX EMBOSS

New moisture wicking and supportive fabric with a superb emboss texture and hand feel.

FABRIC BLEND: 85% NYLON/15%SPANDEX
FABRIC METRICS: 6.54 OZ/YD²; 221 G/M²
FINISH: UPF RATING 50

ULTRA AERO S

Textured warp knitted tricot reduces aerodynamic drag with dimensional construction and a dimpled surface. The firm stretch and recovery provides greater muscle support and increased fatigue prevention.

FABRIC BLEND: 78% NYLON 22% SPANDEX
FABRIC METRICS: 5.90 OZ/YD²; 210 G/M²
FINISH: WICKING

ZAP

A top layer fabric treatment that provides explosive light reflection. Zap technology is our proprietary process of screening micro-glass lenses to high performance fabrics adding reflectivity to be seen from every angle. Garments utilizing Zap Technology are designed to be visible within a critical detection distance of 140 meters (based on a vehicle traveling 50 mph/80 kph).

ABOUT SUGOI

Since 1987, Sugoi has forged a culture of innovation to deliver technically advanced performance apparel for all conditions. Born in Vancouver, BC, Sugoi was founded by fashion designer Carol Prantner and competitive cyclist David Holland. Carol and David believed they could build a better bike short, and it was from the garage of their West Side Vancouver home that Sugoi was born.

From the very beginning, Carol and David sought out the best fabrics available. Their search led them to Japan where the pair would ask for the most “incredible” fabrics. It was here that we earned our name, as “incredible” translates to “Sugoi” in Japanese.


CONNECT WITH US

Facebook
SUGOI Performance Apparel

Twitter
@SUGOI_Apparel

Instagram
@SUGOIapparel

Toll free phone 800.432.1335
Vancouver, BC

sugoi.com 

 **SUGOI IS FOR EVERYONE**

We believe everyone has the right to an environment where they can be themselves. This symbol of acceptance confirms our company's beliefs that everyone has the right to celebrate for being their authentic selves.